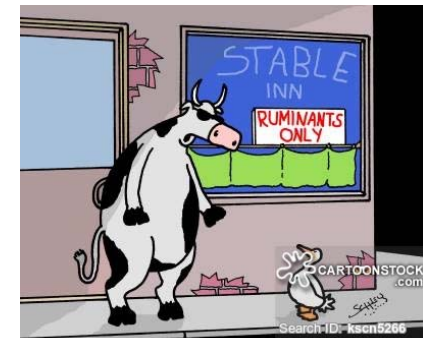


Recent advances in identification of bacteria involved in rumen lipid metabolism

Dr Sharon Huws
Senior Lecturer in Animal Science
IBERS, Aberystwyth University, UK



"LOOK, BUDDY... WE DON'T LIKE YOUR KIND
IN HERE, OKAY?"

Outline

- Background
- Understanding of rumen microbial lipolysis
- Understanding of rumen microbial biohydrogenation
- Interactions of the rumen protozoa with the plant chloroplast
- Possible future directions
- Conclusions

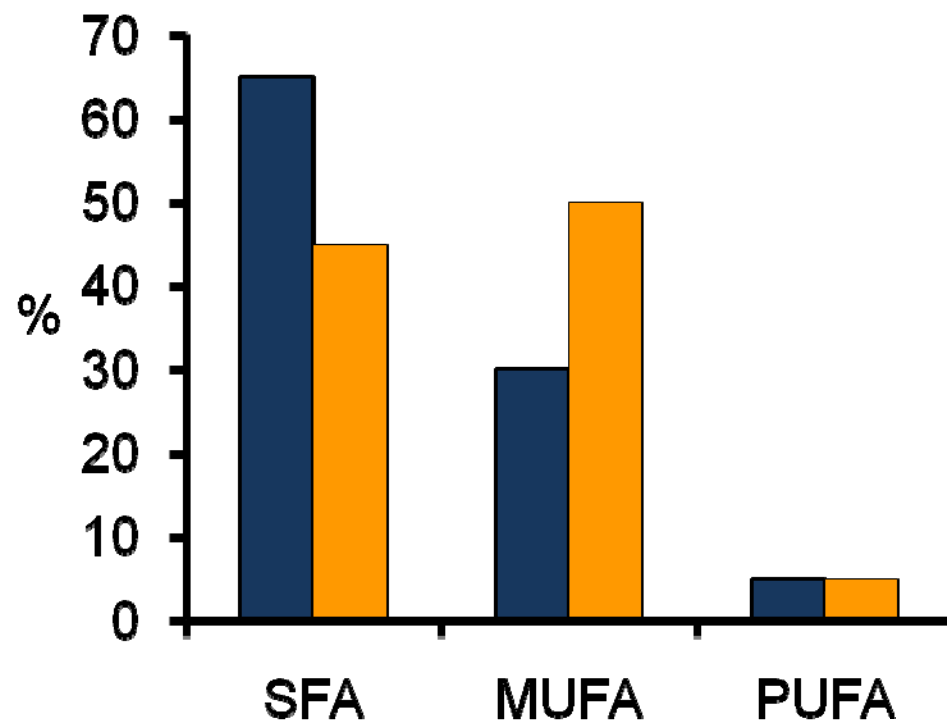


"LOOK, BUDDY... WE DON'T LIKE YOUR KIND IN HERE, OKAY?"

Background: Fatty acids in ruminant products



■ Milk ■ Beef

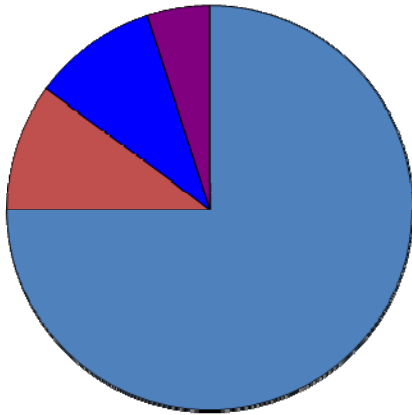


PUFA

- linoleic acid ($18:2n-6$)
- α -linolenic acid ($18:3n-3$)
- eicosapentaenoic acid ($20:5n-3$; EPA)
- docosahexaenoic acid ($22:6n-3$; DHA)
- conjugated linoleic acids

Need to improve healthiness of ruminant products

Perennial ryegrass lipids: opportunity

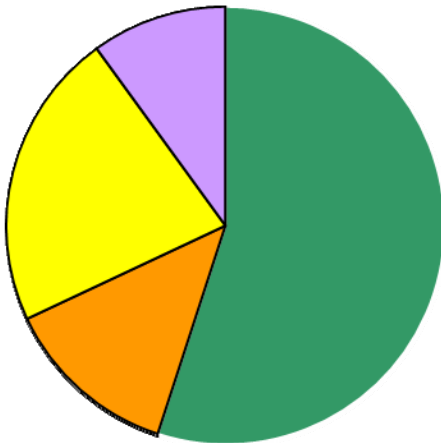


■ Membrane Lipid

■ Triacylglycerol

■ Diacylglycerol

■ Free Fatty Acid



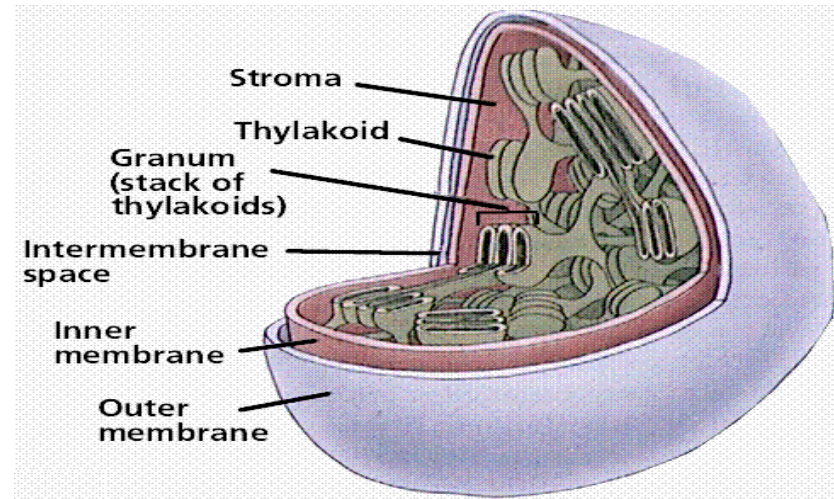
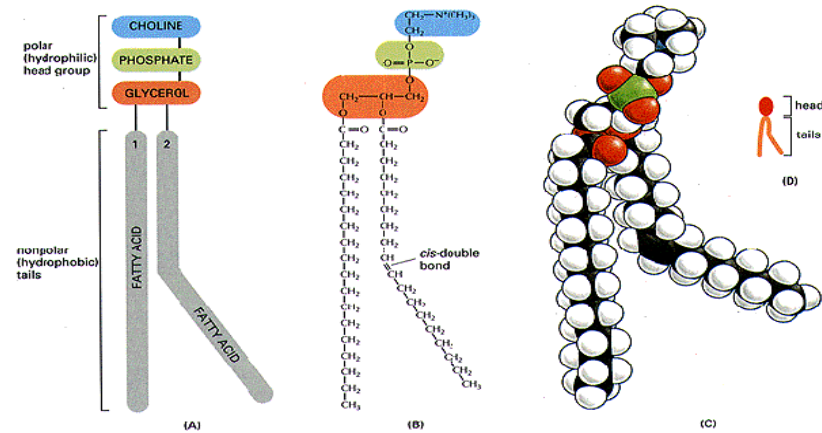
■ linolenic acid (18:3n-3)

■ linoleic acid (18:2n-6)

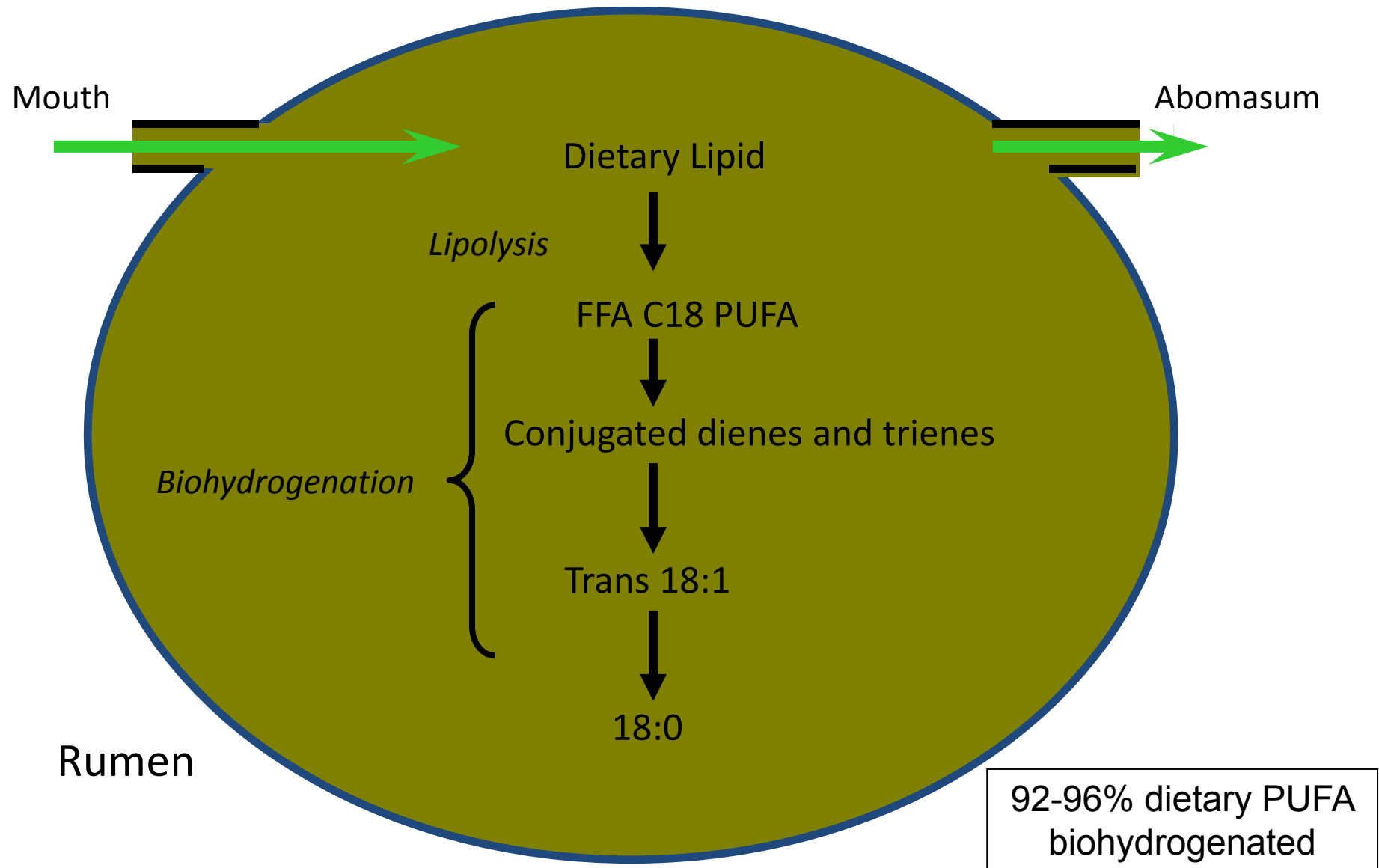
■ palmitic acid (16:0)

■ other

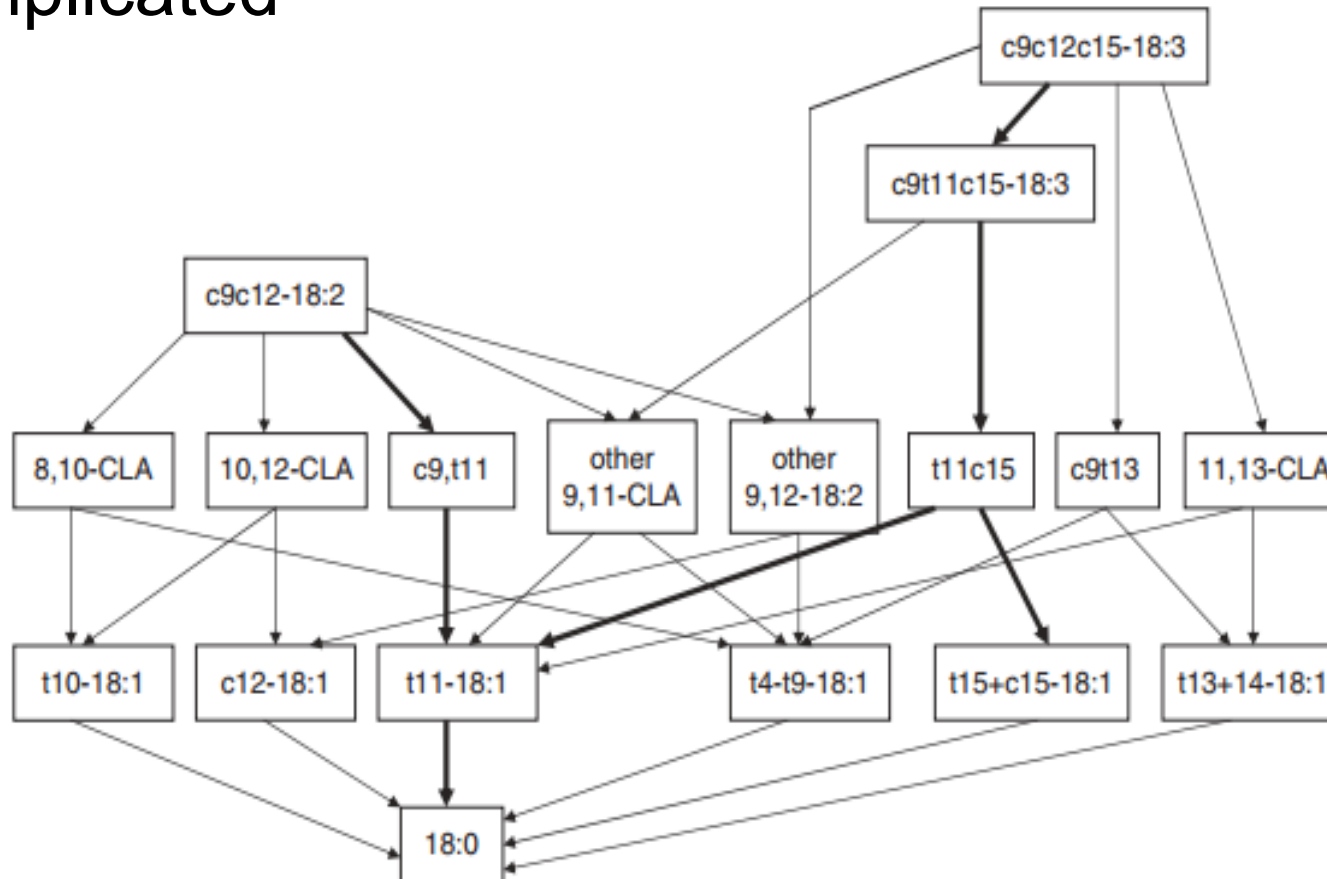
Three diagrams of the structure of phosphotidylcholine, a common phospholipid in membranes



Overview of lipolysis and biohydrogenation within the rumen



Biohydrogenation pathways are more complicated



Now know other triene intermediates, such as 9,11,13; cis-7, cis-12, cis-15; cis-8, cis-12, cis-15 are formed from LNA (Honkanen *et al.*, 2016)

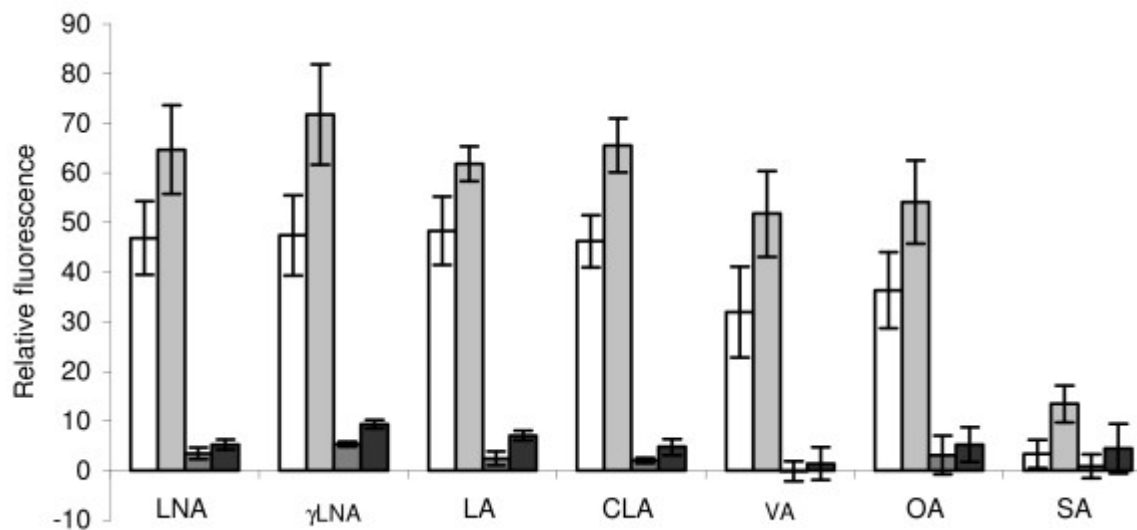
Taken from Chilliard *et al.*, 2006

RESEARCH ARTICLE

Open Access

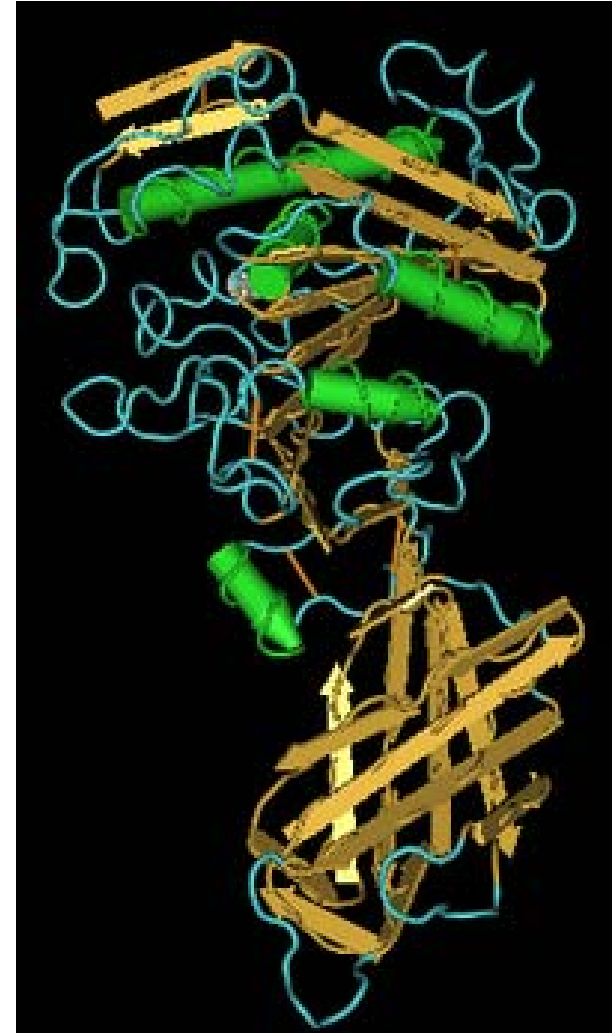
Toxicity of unsaturated fatty acids to the biohydrogenating ruminal bacterium, *Butyrivibrio fibrisolvens*

Margarida RG Maia^{1,2,4}, Lal C Chaudhary^{1,5}, Charles S Bestwick¹, Anthony J Richardson¹, Nest McKain¹, Tony R Larson³, Ian A Graham³, Robert J Wallace^{1*}

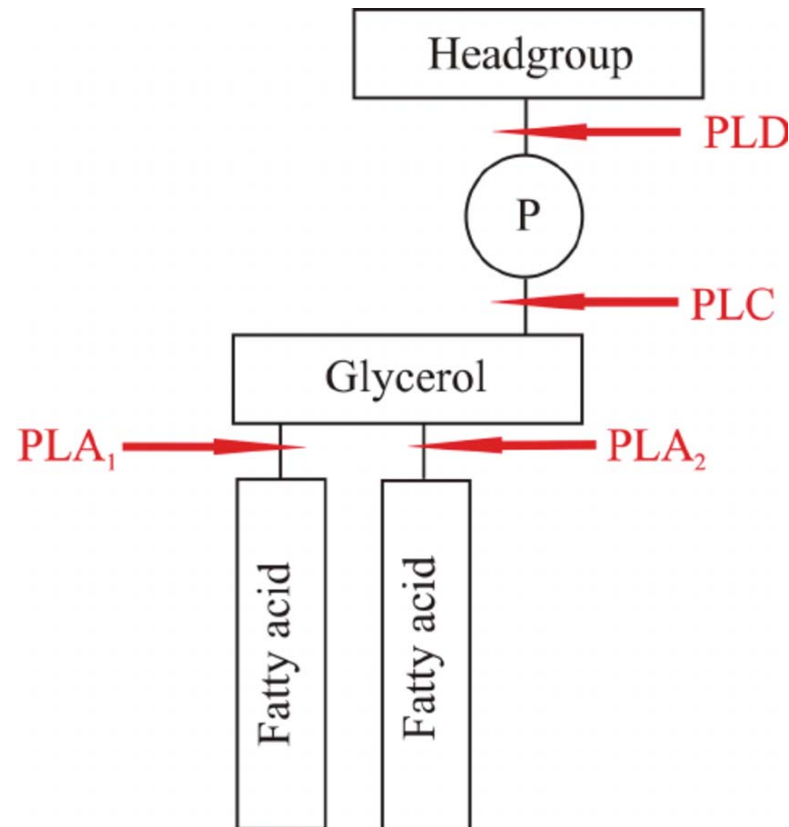


Fatty acid methyl esters reduces the integrity of *Butyrivibrio fibrosolvens* JW11

Understanding of rumen microbial lipolysis



Lipolysis of phospholipids (membrane lipids)



PLD: Phospholipase D; **PLC:** Phospholipase C; **PLA₁:** Phospholipase A₁; **PLA₂:** Phospholipase A₂. All are present in perennial ryegrass and many of the rumen microbiota, in particular PLA₁ and PLA₂.

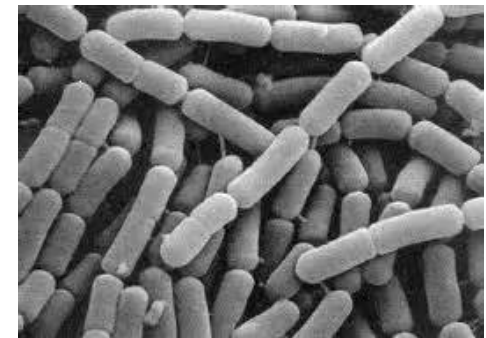
Understanding of rumen lipolysis

- Plant undergo lipolysis under abiotic and biotic stress
- Faruque *et al.* (1974) concluded that plant lipases contributed to more release of non-esterified fatty acids than bacterial lipases in the rumen.
- Others suggest bacterial lipases more important e.g Dawson *et al.* (1977).
- No real consensus to date

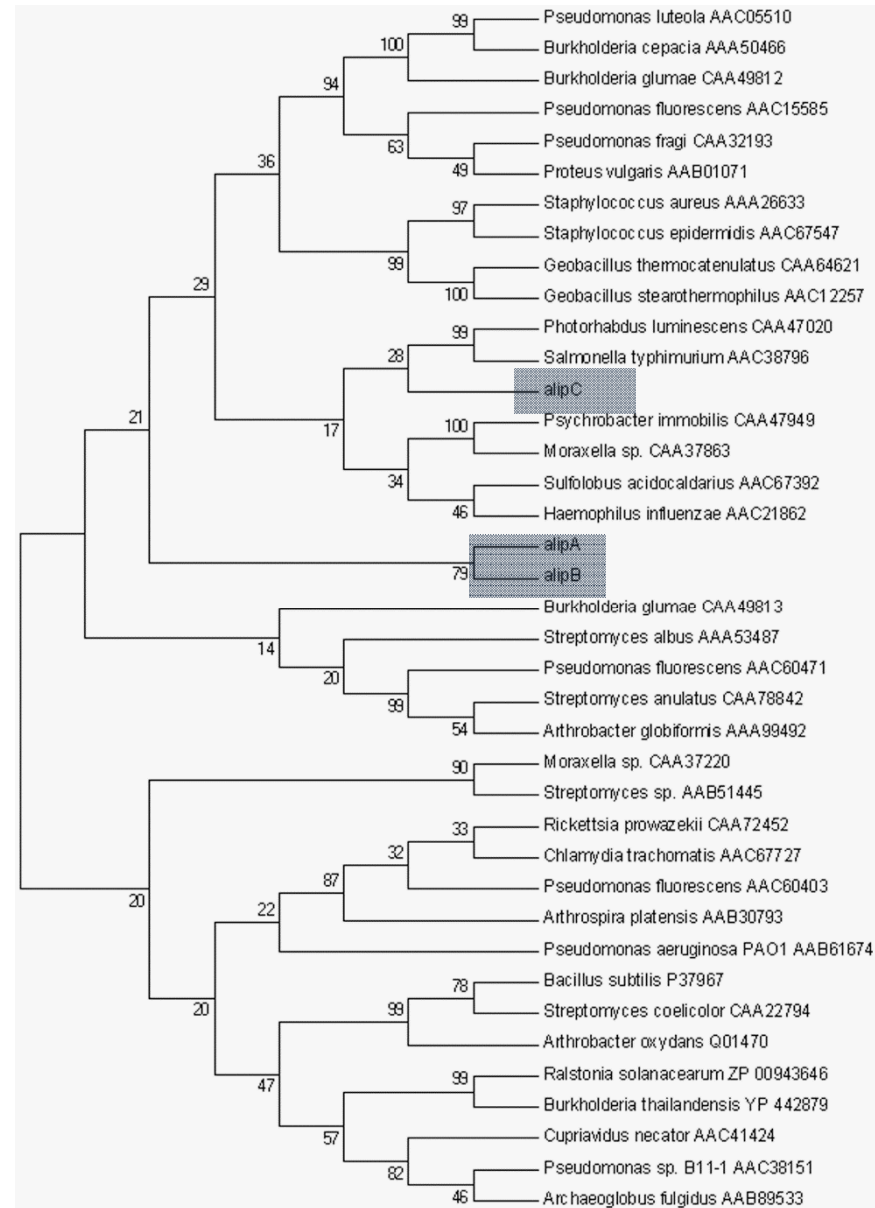


Rumen bacterial lipolysis

- Historically only *Anaerovibrio lipolyticus* and *Butyrivibrio* spp. implicated.
- *A. lipolyticus* known to hydrolyse triglycerides to glycerol and non-esterified fatty acids, but thought unlikely to be able to hydrolyse phospholipids.
- *Butyrivibrio* spp. able to hydrolyse phospholipids.



A. lipolyticus draft genome sequence revealed the possession of family II and V lipases



Prive *et al.*, 2013. Identification and characterization of three novel lipases belonging to families II and V from *Anaerovibrio lipolyticus* 5ST. *PLOS ONE*, e69076

A. lipolyticus lipase specificity

Substrate	Specific activity (U·mg ⁻¹ protein)		
	alipA	alipBss	alipC
pNP-acylestere			
Butyrate (C4)	139.4±17.4	91.8±22.9	186.7±41.5
Caproate (C6)	73.8±19.0	48.6±11.5	76.0±48.9
Caprylate (C8)	98.4±17.4	59.4±21.8	269.6±71.7
Caprate (C10)	32.8±9.5	43.2±11.4	117.5±5.3
Laurate (C12)	639.6±24.0	97.2±24.7	242.0±38.4
Myristate (C14)	172.2±17.4	156.6±11.5	193.6±34.2
Palmitate (C16)	123.0±19.1	64.8±27.6	83.0±37.5
Stearate (C18)	73.8±17.3	ND	34.6±20.8

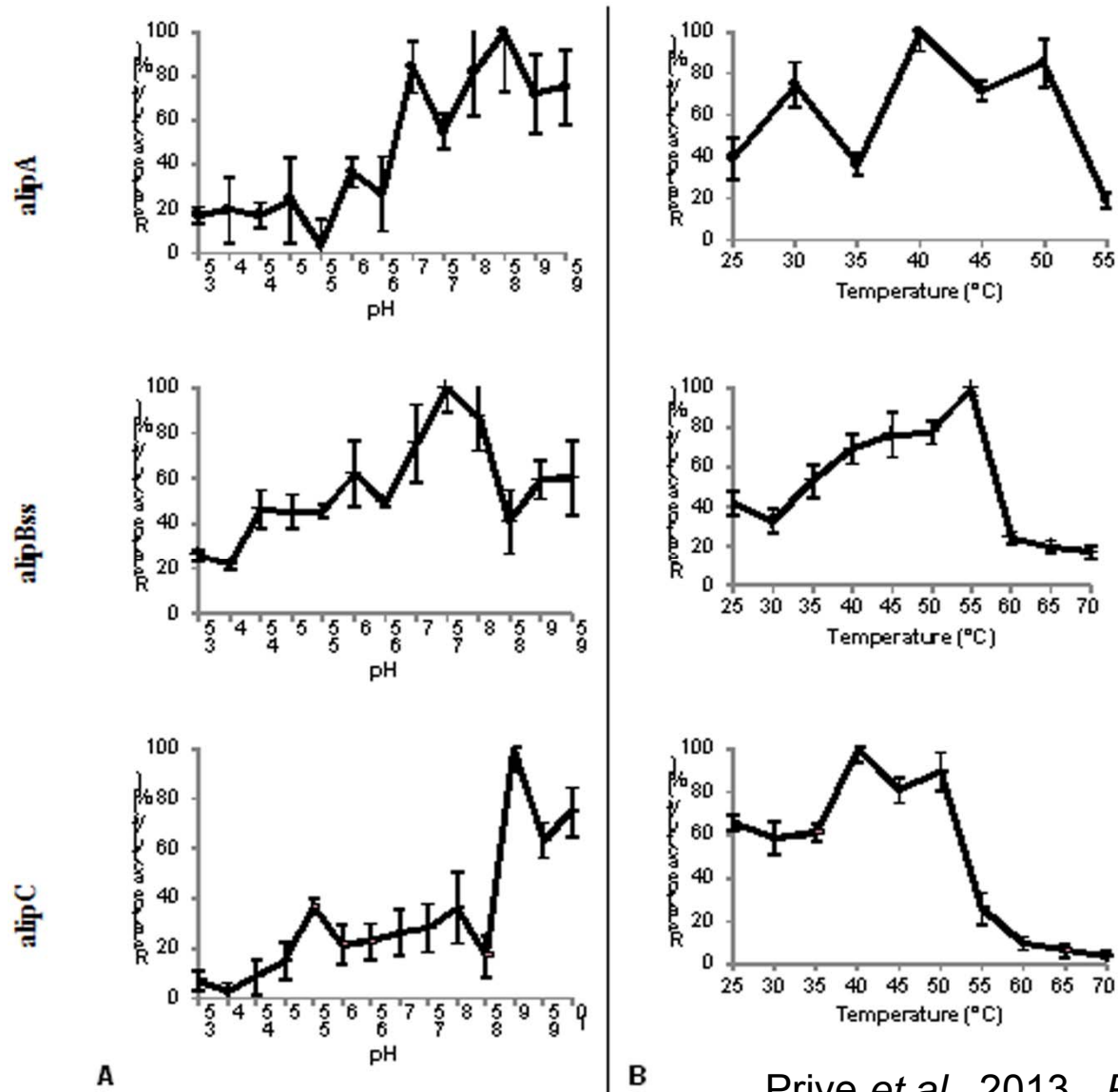
ND. Not detected.

doi:10.1371/journal.pone.0069076.t004

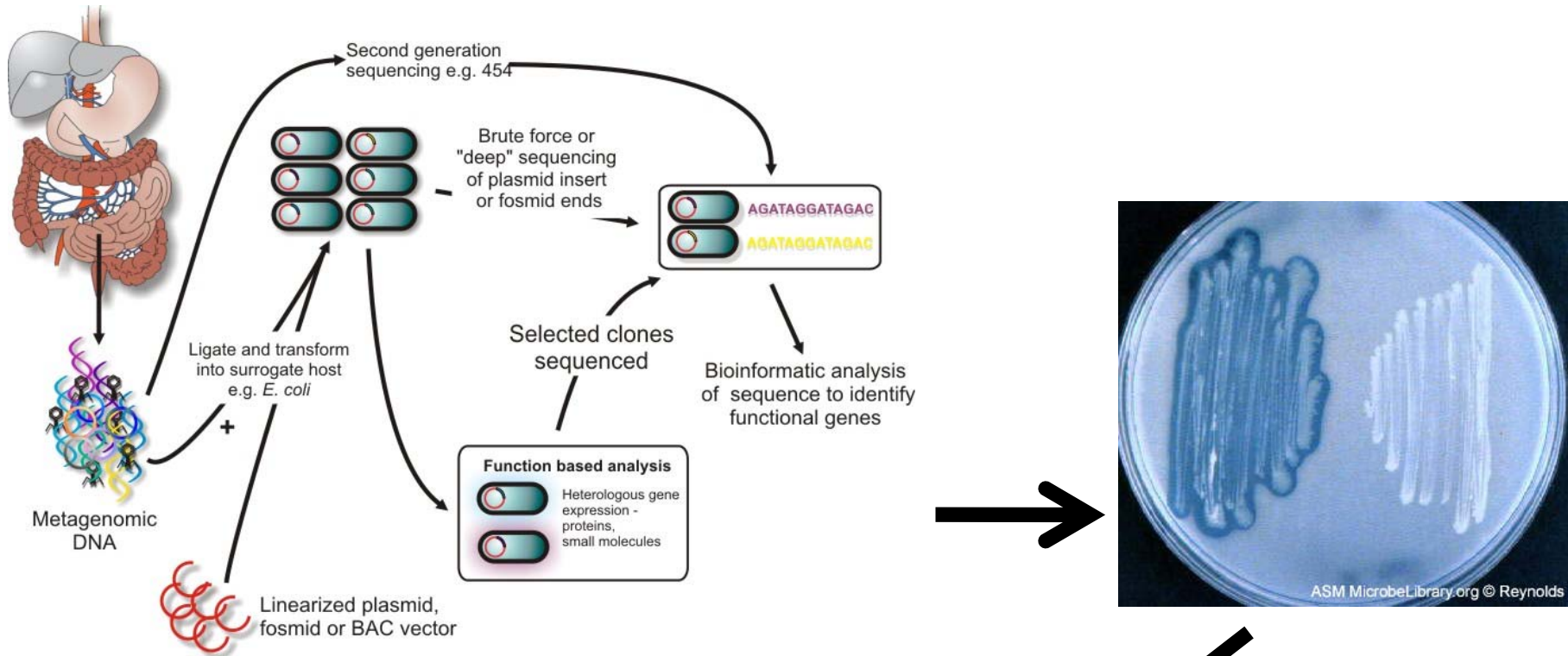
AlipB and AlipC also showed activity against the triglycerides Tributyrin (C4), Tricaprylin (C8) and Triolein (C18:1)

Prive *et al.*, 2013.. *PLOS ONE*, e69076

A. lipolyticus isolated lipases show pH and temperature tolerance



Discovery of lipases/esterases from rumen bacterial metagenomes

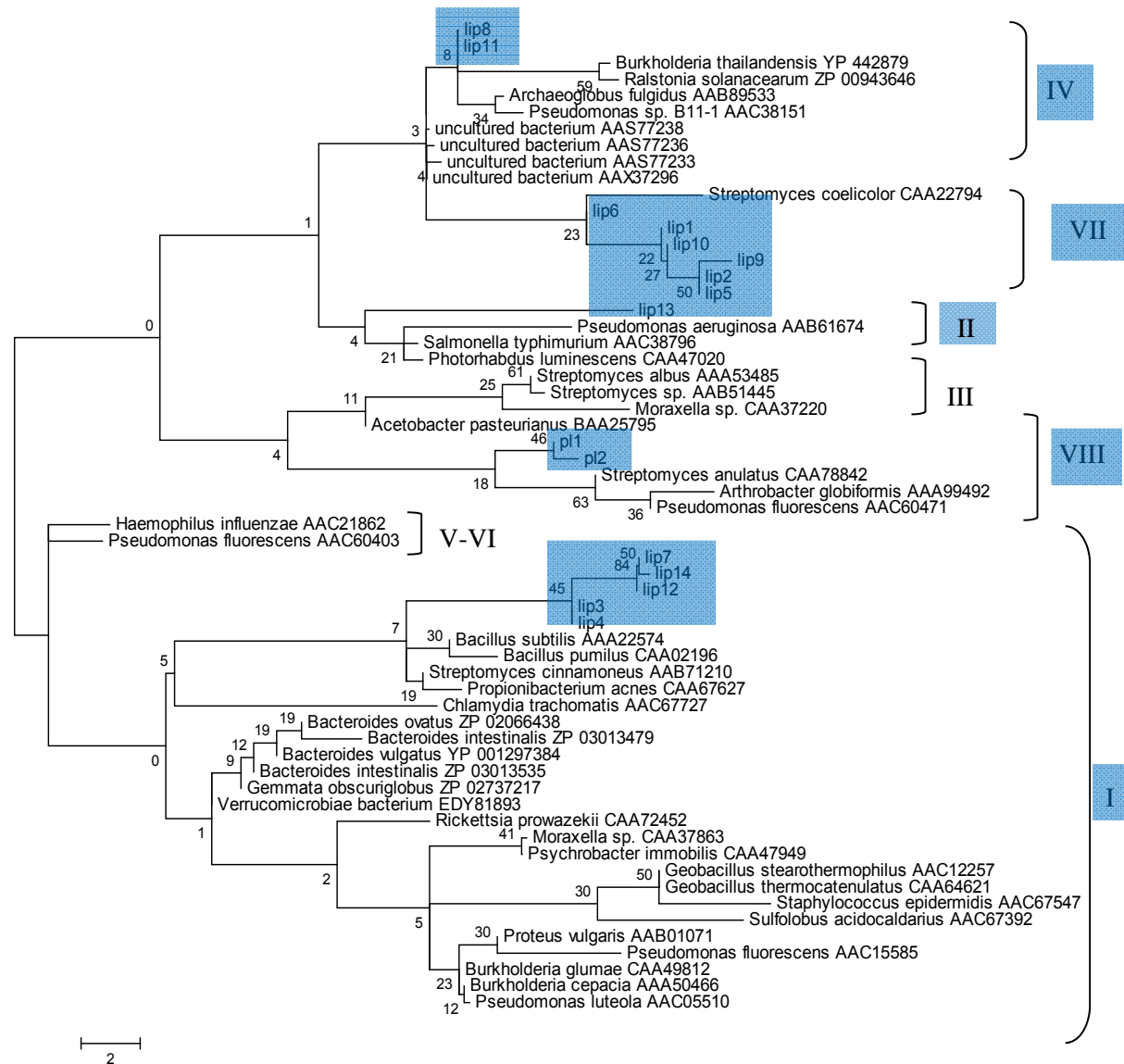


Positive clones sequenced =
16 putative lipases/esterases

(little homology to culturable sequenced rumen bacteria)

Privé F, Kaderbhai NN, Golyshina OV, Golyshin PN, Scollan ND, Newbold CJ, Huws SA. Novel lipases isolated from a bovine rumen metagenome. *Appl Microbiol Biotech* 99:5475-5485. 2015.

Phylogenetic positioning of isolated lipases relative to lipases within categorised families



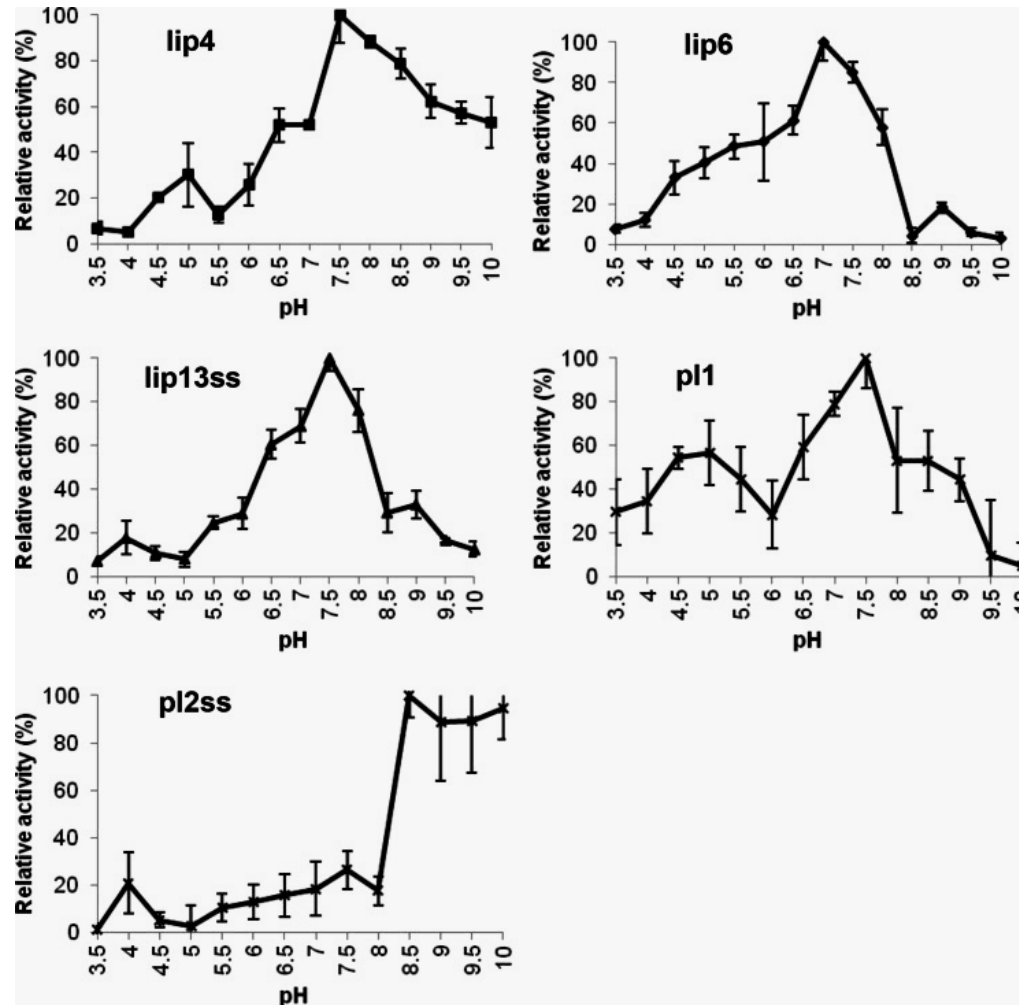
Privé et al. (2015). *Appl Microbiol Biotech* 99:5475-5485.

Lipase specificity of a selection of those discovered

Substrate	Specific activity (U/mg protein)				
	lip4	lip6	lip13ss	pl1	pl2ss
pNP-acyl esters					
Butyrate (C4)	56.3 ± 12.1	273.3 ± 22.5	ND	247.8 ± 11.1	172.5 ± 12.0
Caproate (C6)	28.7 ± 24.9	198.6 ± 10.8	51.1 ± 14.5	154.9 ± 21.8	58.8 ± 20.4
Caprylate (C8)	36.0 ± 23.7	42.4 ± 16.7	20.5 ± 14.4	317.5 ± 31.6	141.2 ± 17.0
Caprate (C10)	107.7 ± 37.3	30.5 ± 5.1	214.6 ± 14.5	224.6 ± 5.5	109.8 ± 4.5
Laurate (C12)	373.4 ± 45.7	23.8 ± 8.7	398.6 ± 7.1	224.6 ± 11.0	274.5 ± 36.3
Myristate (C14)	71.7 ± 12.4	18.7 ± 4.3	153.3 ± 25.6	209.1 ± 20.4	227.4 ± 27.2
Palmitate (C16)	ND	13.6 ± 7.0	ND	162.6 ± 32.4	235.3 ± 67.9
Stearate (C18)	ND	ND	ND	46.5 ± 32.8	109.8 ± 29.7

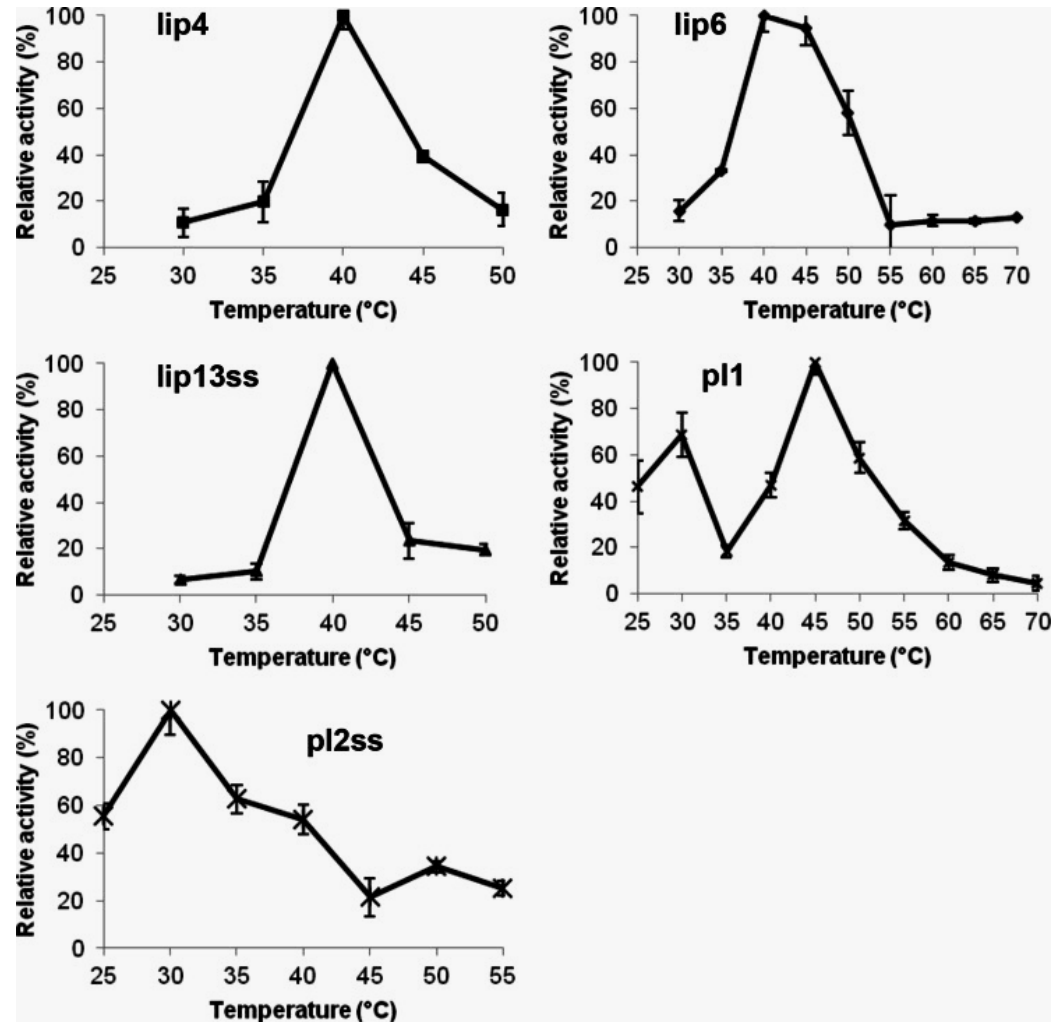
All showed some activity against the triglycerides Tributyrin (C4), Tricaprylin (C8) and Triolein (C18:1)

Isolated lipases varying degrees of pH tolerance



Privé *et al.* (2015). *Appl Microbiol Biotech* 99:5475-5485.

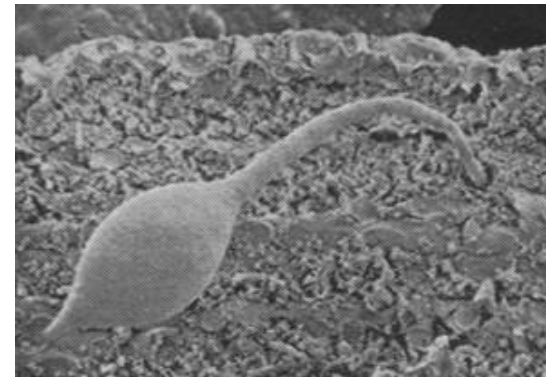
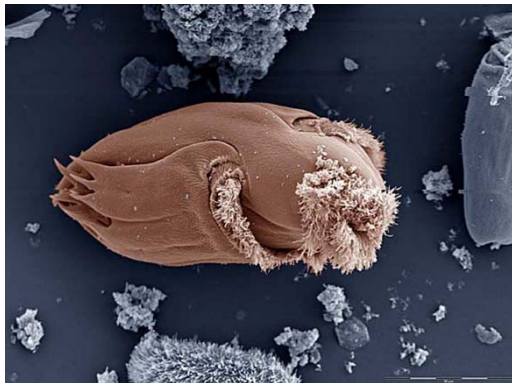
Isolated lipases varying degrees of temperature tolerance



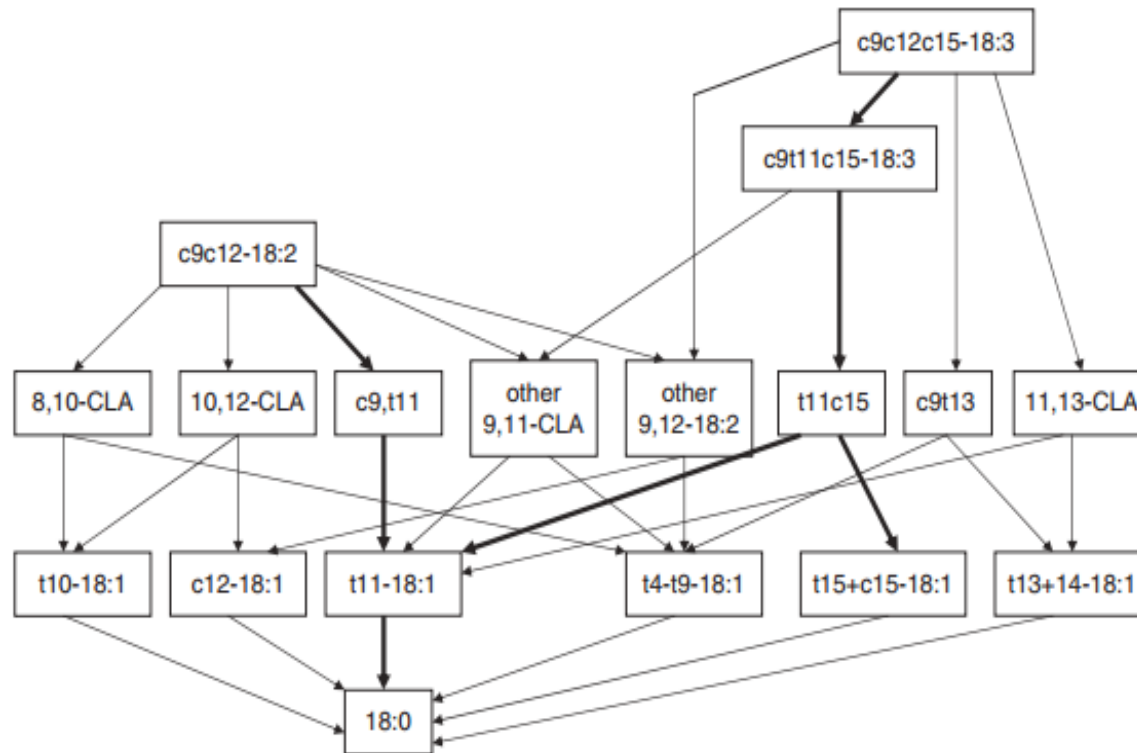
Privé *et al.* (2015). *Appl Microbiol Biotech* 99:5475-5485.

Contribution of the eukaryotome to rumen lipolysis

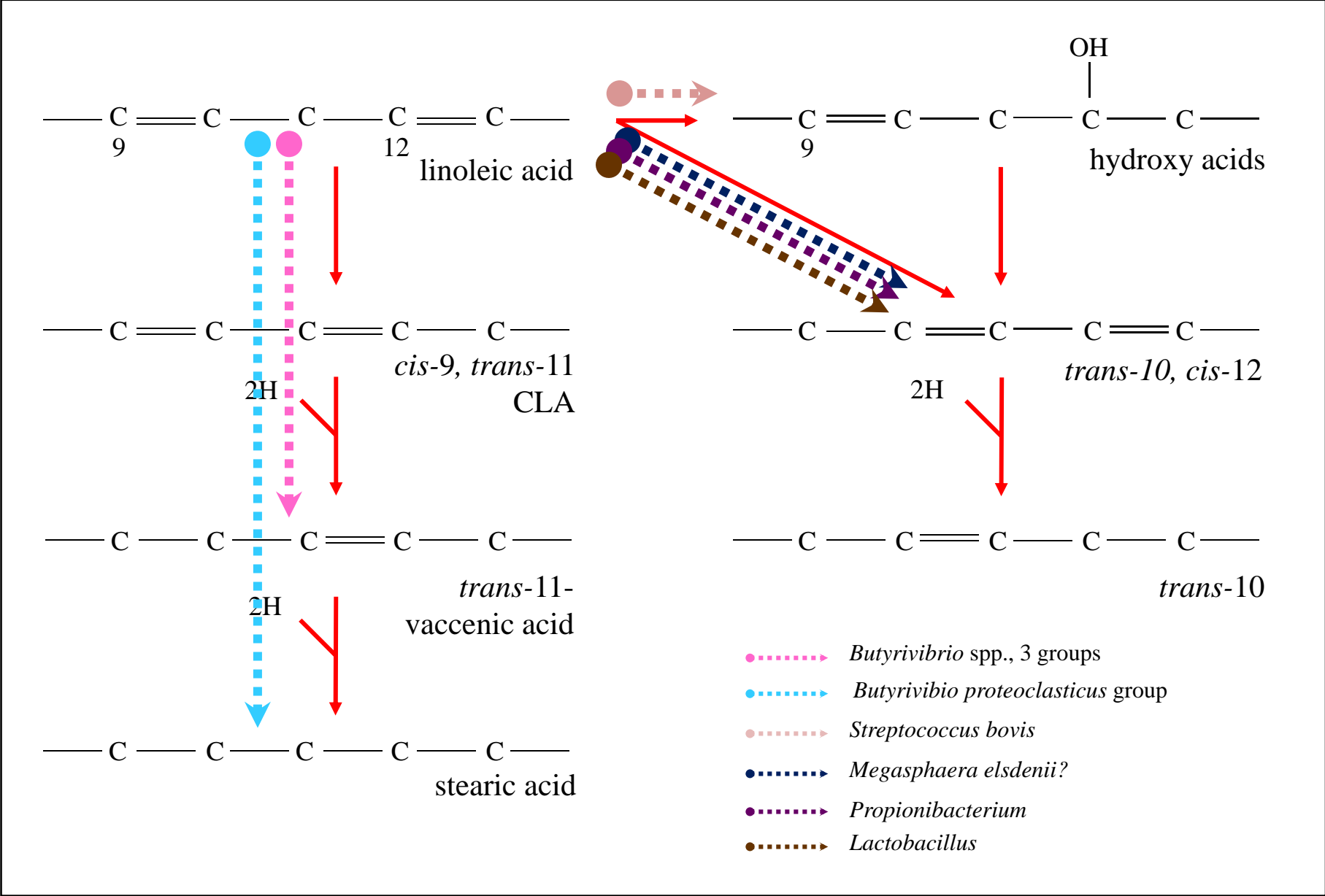
- No evidence that the rumen fungi play a role, but understudied.
- Rumen protozoal contribution disputed due to contamination of assays by bacteria.



Understanding of rumen microbial biohydrogenation



Historical understanding of rumen bacterial biohydrogenation



Biohydrogenation of long chain PUFA (LCPUFA)

c4c7c10c13c16c19 22:6

(t)5(c)10(c)13(c)16(c)19 22:5

c7c10c13c16c19 22:5

c4c7c10c13c16 22:5

(t)10(t)13(c)16(c)19 22:4

(t)8(c)13(c)16(c)19 22:4

(c)7(t)13(c)16(c)19 22:4

c10c13c16c19 22:4

(t)12(c)16((c)19 22:3

(c)10(t)14(c)19 22:3

Δ 10,13,17 22:3

c10c13c16 22:3

t12t17 22:2

c13c16 22:2

t17 22:1

t15 22:1

t14 22:1

t13 22:1

t12 22:1

t10+t11 22:1

c11 22:1

c13 22:1

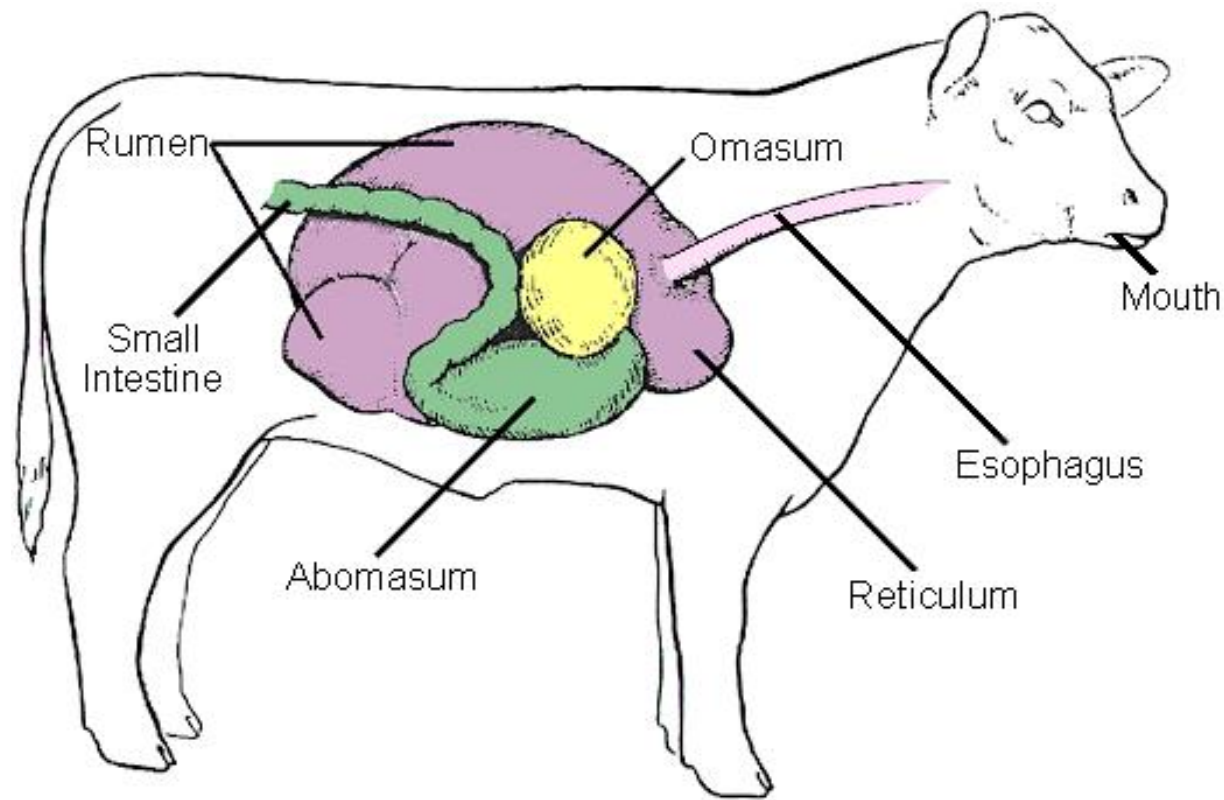
c14 22:1

c15 22:1

- *Butyrivibrio* spp. inhibited by fish oil *in vitro* (Wasowska et al., 2006)

- At lower concentrations of DHA *Butyrivibrio* spp. again implicated *in vitro*. (Jeynathan et al., 2016)
- *Clostridium bif fermentans* also able to convert LCPUFA (Sakurama et al., 2014)

Is the situation this simple
in vivo?



Role of *Butyrivibrio* on biohydrogenation *in vivo*

Intervention	Animal type	Reduced biohydrogenation	Link to <i>Butyrivibrio</i> ?	Reference
Ricinoleic acid	Sheep	Y	Y	Ramos Morales <i>et al.</i> 2015
Cumin seed extract	Goats	y	N	Miri <i>et al.</i> , 2015
Sunflower oil and palm oil	Cows	y	N	Vargas-Bello Perez <i>et al.</i> 2016
Echium and linseed oil	Steers	y	N	Huws <i>et al.</i> , 2015
Fish oil	Cows	y	y	Shingfield <i>et al.</i> , 2012
Fish oil	Steers	Y	N	Kim <i>et al.</i> , 2008
Fish oil	Steers	Y	N	Huws <i>et al.</i> , 2011
Algae	Cows	Y	Y	Boeckaert <i>et al.</i> , 2008
Algae	Goats	Y	N	Zhu <i>et al.</i> 2016

Our Fish oil study

3 × 3 repeated Latin Square with two animals per treatment.

Treatments:

F0 – Fish oil control (0% Dry Matter Intake (DMI))

F1 – Fish oil 1% DMI

F3 – Fish oil 3% DMI

Digesta flow at the duodenum was estimated using a dual-phase marker technique with ytterbium acetate and chromium ethylene diamine tetra acetic acid.

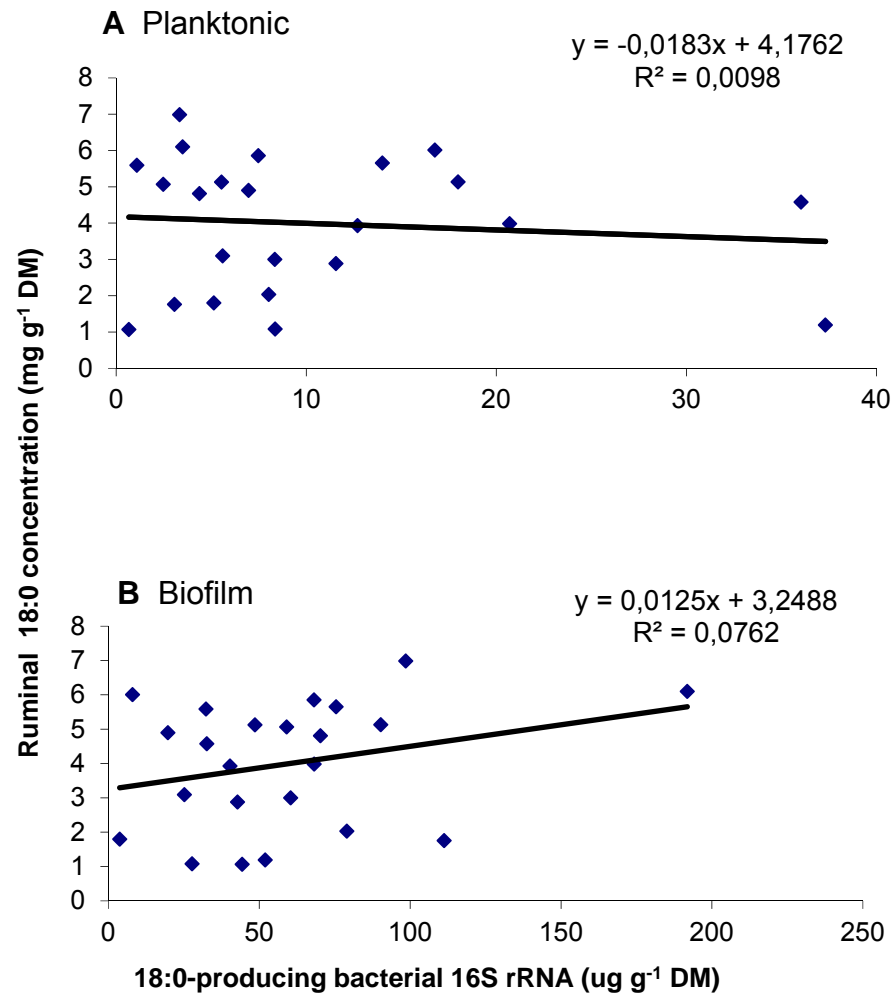
LABs and SABs collected from rumen fluid for microbial analysis on rRNA basis

Concentration of key fatty acids within the rumen of steers receiving diets containing 0 (F0), 1 (F1) or 3% (F3) fish oil

	Diets			S.E.D	Significance
	F0	F1	F3		
Fatty acid content (mg g ⁻¹ DM)					
16:0	6.01	6.29	6.05	0.509	NS
18:0	5.25 ^a	4.47 ^b	2.07 ^c	0.638	<.001
18:1 <i>trans</i> -11	0.84 ^a	1.64 ^b	4.18 ^c	0.345	<.001
18:1 <i>trans</i> -10	0.11 ^a	0.16 ^a	0.26 ^b	0.028	<.001
18:2 <i>cis</i> -9, <i>trans</i> -11	0.03 ^a	0.04 ^b	0.05 ^b	0.006	0.003
18:2 <i>trans</i> -10, <i>cis</i> -12	0.01	trace	0.01	0.002	NS
18:2(n-6)	1.55 ^a	1.58 ^a	1.16 ^b	0.125	0.009
18:3(n-3)	1.20 ^a	1.31 ^a	0.81 ^b	0.117	0.002
Total LC (C20+)	0.34 ^a	0.81 ^b	1.50 ^c	0.092	<.001
Total fatty acids	20.2	22.6	23.9	1.90	NS

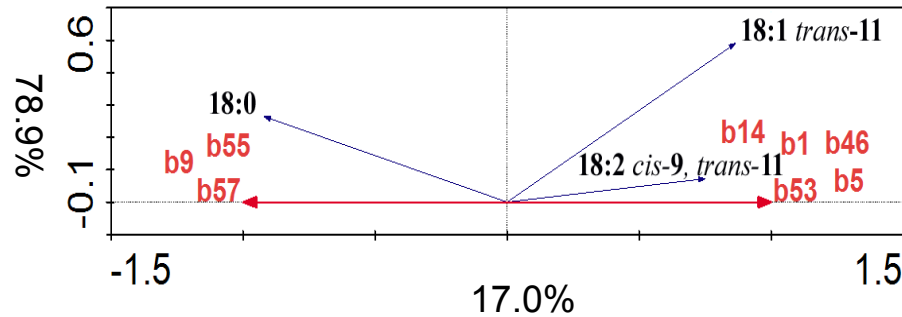
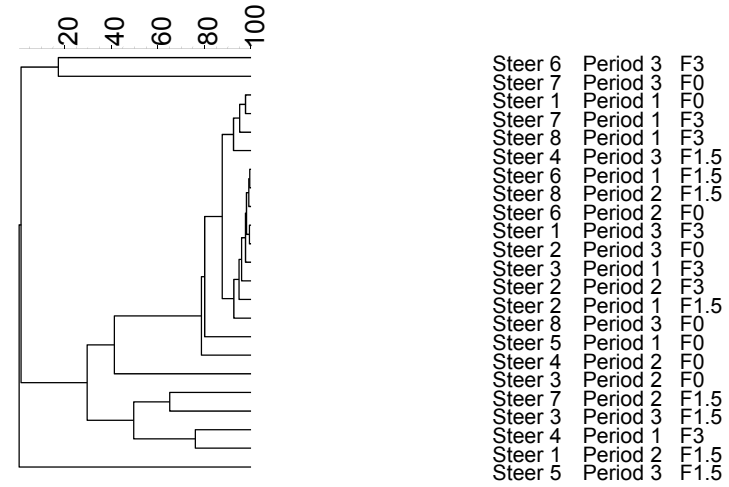
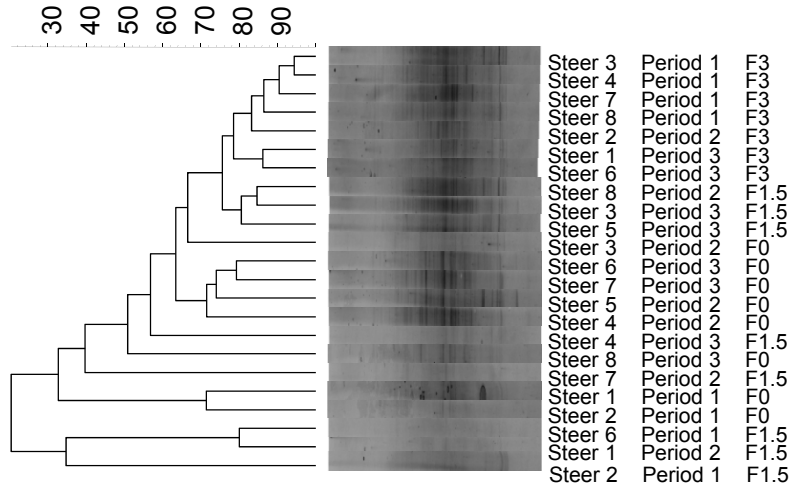
NS – Not Significant

Values with different superscripts are significantly different ($P > 0.05$).

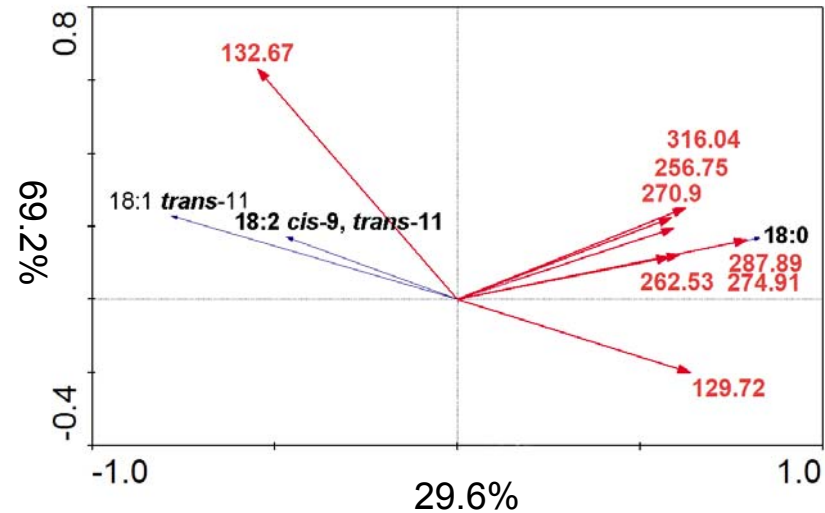


Quantitative PCR data showing correlation between *C. proteoclasticum* 16S rRNA gene concentration and ruminal 18:0 concentration for planktonic (LAB; A) and biofilm (SAB; B) samples.

As yet uncultured *Prevotella*, *Lachnospiraceae* incertae sedis, and unclassified *Bacteroidales*, *Clostridiales* and *Ruminococcaceae* may play a predominant role in ruminal biohydrogenation

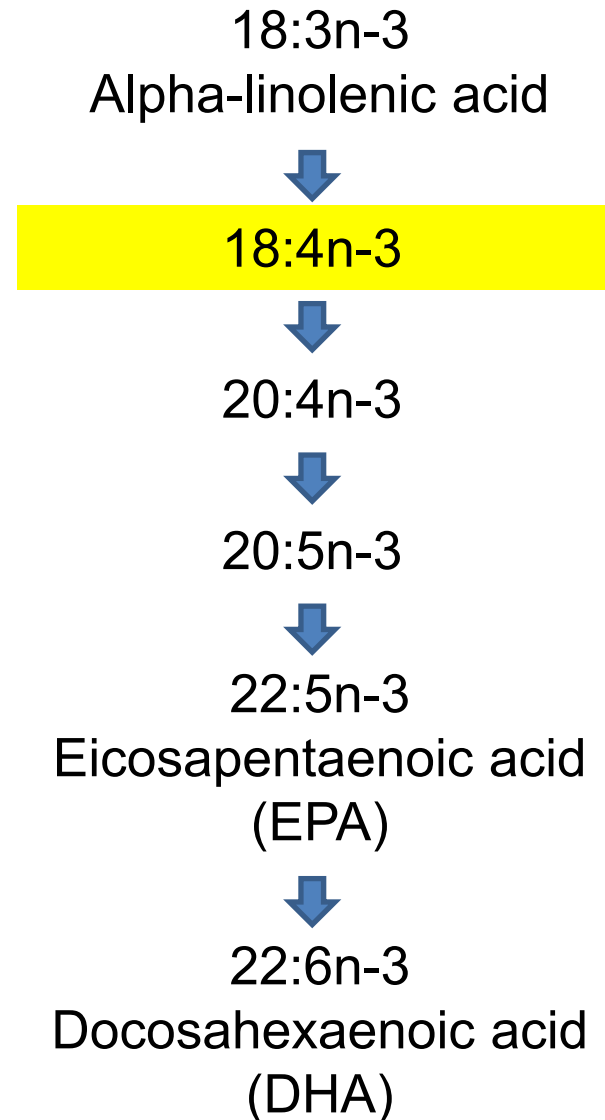


F0 - 0% fish oil
 F1.5 - 1.5% Fish oil
 F3 - 3% Fish oil



Echium oil

- Conversion of 18:3n-3 to 18:4n-3 is important (rate-limiting) for EPA and DHA synthesis in liver
- 18:4n-3 is rich in Echium oil



Echium oil and flaxseed oil study

3 × 3 repeated Latin Square with two animals per treatment.

Treatments:

GS – Grass silage

GSE – 3% DMI Echium oil and grass silage

GSF – 3% DMI flaxseed oil and grass silage

Rumen fatty acids sampled for fatty acid and microbial analysis 2 h after feeding on day 21 of the period.

Rumen fatty acid profiles in steers fed grass and sugar beet (GS), and GS with the addition of flax (GSF) or echium oil (GSE)¹

Fatty acid	Diets			SED	P
	GS	GSF	GSE		
Branched and Odd chain fatty acids (BOC)	1.437 ^a	1.450 ^a	1.547 ^a	0.060	0.231
12:0	0.612 ^a	0.651 ^a	0.653 ^a	0.03	0.350
14:0	0.312 ^a	0.336 ^b	0.334 ^b	0.007	0.016
16:0	3.207 ^a	4.251 ^b	4.980 ^c	0.140	<0.001
18:0	4.193 ^a	9.783 ^b	11.061 ^b	0.580	<0.001
18:1 <i>trans</i> -6,-7,-8	0.024 ^a	0.246 ^b	0.253 ^b	0.009	<0.001
18:1 <i>trans</i> -9	0.019 ^a	0.166 ^b	0.217 ^c	0.006	<0.001
18:1 <i>trans</i> -10	0.030 ^a	0.201 ^b	0.246 ^c	0.001	<0.001
18:1 <i>trans</i> -11	0.555 ^a	2.999 ^b	4.797 ^c	0.320	<0.001
18:1 <i>trans</i> -12	0.034 ^a	0.231 ^b	0.291 ^c	0.013	<0.001
Sum 18:1 <i>trans</i>	0.850 ^a	4.926 ^b	6.832 ^c	0.352	<0.001
18:1 <i>cis</i> -9	0.606 ^a	3.423 ^b	3.419 ^b	0.176	<0.001
18:1 <i>cis</i> -11	0.089 ^a	0.120 ^b	0.221 ^c	0.008	<0.001
18:1 <i>cis</i> -12	0.010 ^a	0.082 ^b	0.051 ^c	0.008	<0.001
18:1 <i>cis</i> -13	0.011 ^a	0.027 ^b	0.030 ^b	0.003	<0.001
Sum 18:1 <i>cis</i>	0.126 ^a	0.378 ^b	0.388 ^b	0.021	<0.001
18:2 <i>cis</i> -9, <i>trans</i> -11	0.029 ^a	0.274 ^b	0.332 ^c	0.022	<0.001
18:2 <i>trans</i> -9, <i>trans</i> -12	0.009 ^a	0.054 ^b	0.029 ^c	0.006	<0.001
18:2 <i>cis</i> -9, <i>cis</i> -12	1.429 ^a	2.162 ^b	2.331 ^b	0.238	0.015
18:2 <i>trans</i> -10, <i>cis</i> -12	0.018 ^a	0.019 ^a	0.021 ^a	0.003	0.538
18:2 <i>trans</i> -11, <i>trans</i> -13	0.016 ^a	0.124 ^b	0.125 ^b	0.011	<0.001
Sum 18:2 Conjugated linoleic acid	0.081 ^a	0.470 ^b	0.579 ^c	0.033	<0.001
18:2 n -6	1.429 ^a	2.162 ^b	2.331 ^b	0.240	0.020
18:3 n -3	1.104 ^a	3.670 ^b	2.970 ^b	0.374	<0.001
18:4 n -3	0.049 ^a	0.041 ^a	1.261 ^b	0.170	<0.001
20:0	0.190 ^a	0.248 ^b	0.257 ^b	0.011	<0.001
20:4	ND	ND	ND	NA	NA
20:5	0.000 ^a	0.008 ^b	0.013 ^c	0.000	<0.001
22:5	ND	ND	ND	NA	NA
22:6	ND	ND	ND	NA	NA
Sum LCPUFA (C20 and above)	0.681 ^a	0.921 ^b	1.166 ^c	0.082	0.001
Total fatty acids	13.72 ^a	35.75 ^b	38.97 ^b	2.145	<0.001

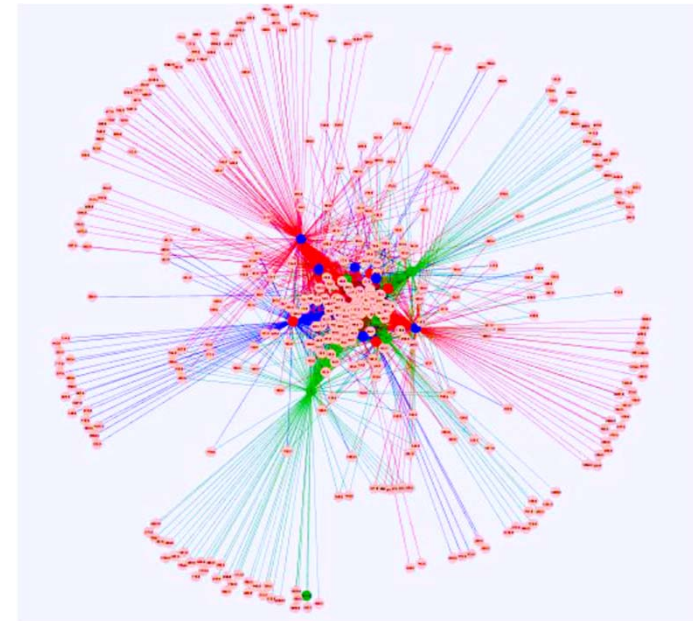
Roseburia and Succinivibrio may be involved in the biohydrogenation of 18:4n-3

Sequencing information

- 724,785 reads pre-QIIMME
- 570,483 reads post-QIIMME
- 95,468 average reads/sample for GS diet
- 187,368 average reads/sample for GSE diet
- Average read length 377bp
- Average OTUs per sample for GS rumen samples 5,095
- Average OTUs per sample for GSE rumen samples 5,972

Genus	Diet		SED	P
	GS	GSE		
Streptomyces	0.024 ^a	0.014 ^b	0.007	0.052
Bacteroidales; other	0.031 ^a	0.0007 ^b	0.005	0.007
Bacteroidetes; other	0.061 ^a	0.027 ^b	0.012	0.010
Prevotella	0.102 ^b	0.058 ^{ab}	0.020	0.027
Anaerolinea	0.020 ^a	0.011 ^b	0.00	0.028
Roseburia	0.007^a	0.024^b	0.005	0.001
Eubacteriaceae;Other	0.034 ^b	0.016 ^a	0.007	0.046
Victivallis	0.040 ^a	0.019 ^b	0.007	0.016
Succinivibrio	0.001^a	0.010^b	0.002	0.014
Proteobacteria; Other	0.111 ^a	0.063 ^b	0.013	0.015

Only genera showing significant differences are shown in the table ($P < 0.05$) (Data shown are % occurrences within the total reads). GS – Grass silage diet; GSE - Grass silage diet with echium oil supplementation.



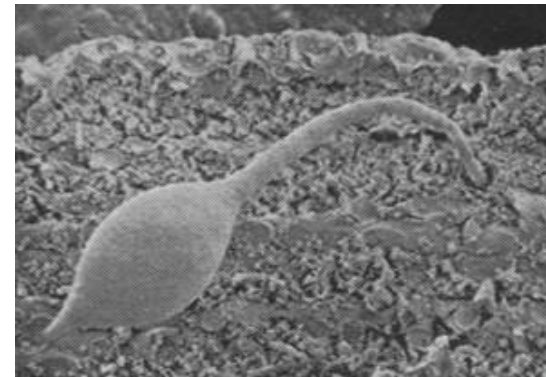
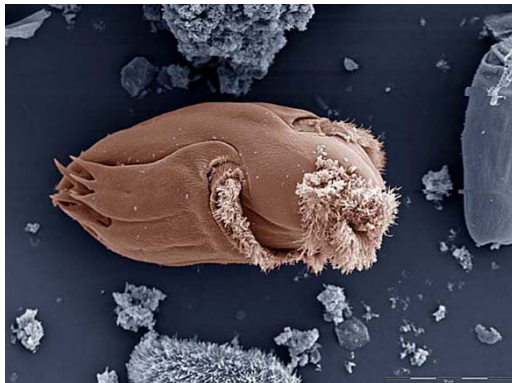
On an OTU level animal variation was the main cause of difference in microbiome seen

Biohydrogenation and rumen microbiome involvement differ dependent on animal type?

- Recent publication from Toral et al. (2016) suggests that the animal genotype plays a role in biohydrogenation capacity due to differences in the rumen microbiome.
- Data shows that the cow rumen lipidome was more concentrated in 18:1 trans-10 than that of goats following feeding with 5.3% sunflower oil and additional starch. More prone to milk fat depression.
- In caprine lipidome 2.2% fish oil dietary supplementation had more of an effect in terms of 18:1 trans-11 formation and decreases in 18:0 than that seen in bovine rumen lipidome.

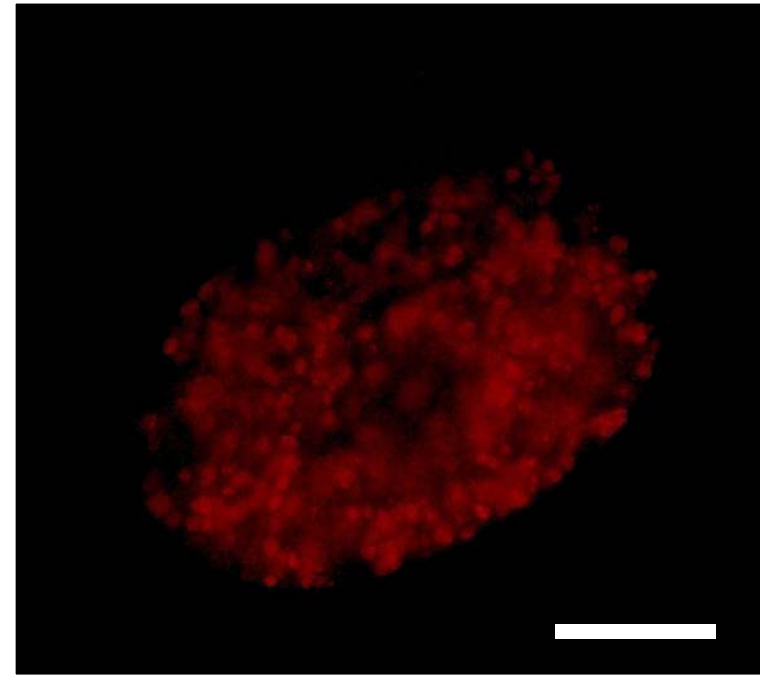
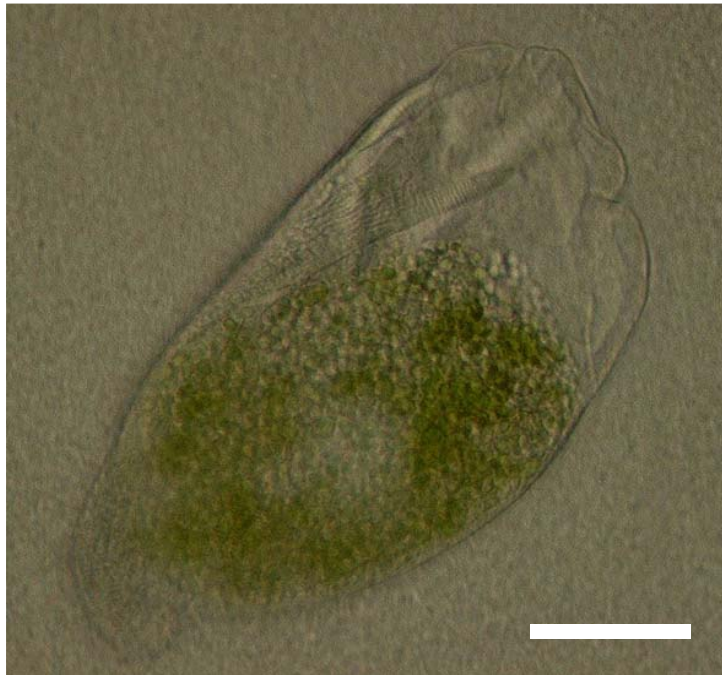
Role of the rumen eukaryotome in rumen biohydrogenation

- Evidence suggests rumen protozoa do not play a role (Devilliard et al., 2006)
- Data published by Nam and Garnworthy (2007) that rumen protozoa, particularly Orpinomyces, have the capacity to biohydrogenate, albeit slowly.



Interactions of the rumen protozoa with the plant chloroplast

Ruminal protozoa are rich in polyunsaturated fatty acids (PUFA) due to ingestion of PUFA-rich chloroplast



***Epidinium* sp. isolated from the rumen of steers fed fresh grass**

Scale bars – 20 μm

Protozoal chloroplast and 18:3 n-3 content post feeding of steers on high and low chloroplast content forages

	Diet S/C (straw/concentrate)	Diet PRG (Fresh Perennial Ryegrass)
Period 1	Steer 1, 2, 3	Steer 4, 5, 6
Period 2	Steer 4, 5, 6	Steer 1, 2, 3



Low chloroplast content



High chloroplast content



	Diet		SED	P-value
	Straw/Conc	Grass		
Protozoal density (10^3 cells mL^{-1})				
Total	256	367	0.295 ²	NS
Holotrich	ND	ND	NA	NA
Entodiniomorphid	256	367	0.295 ²	NS
% protozoa containing intracellular chloroplasts				
Total	22.5	31.8	1.39	*
Holotrich	ND	ND	ND	NA
Entodiniomorphid	22.5	31.8	1.39	*
% protozoa saturated with intracellular chloroplasts (>10 cdl^{-1})				
Total	2.3	5.0	1.17	NS
Holotrich	ND	ND	NA	NA
Entodiniomorphid	2.3	5.0	1.17	NS
Protozoal standard				
Protozoal chlorophyll content ($\mu g mL^{-1}$)				
	1.0	1.1	0.68	NS
Protozoal N content (mg/g)				
	0.48	0.33	0.16	**
DNA:N				
	5.22	3.47	2.19	NS
Protozoal fatty acid content ($\mu g/mg$ N)				
14:0	0.68	0.90	0.11	*
15:0	0.40	0.54	0.20	*
16:0	16.6	8.11	1.96	*
17:0	0.34	0.25	0.13	*
18:0	22.7	12.6	15.0	NS
Trans-11 18:1	3.69	4.26	2.61	*
18:2 n-6	tr	tr	NA	NA
18:3 n-3	0.36	1.41	0.36	*
Cis-9, trans-11 CLA	0.43	0.05	0.18	*
Trans-10, cis-12 CLA	tr	tr	NA	NA
Total Fatty acids	65.1	38.7	21.81	NS

Protozoal contribution to fatty acid flow following feeding of steers on high and low chloroplast content forages

	Duodenal flow (g/d)				Protozoal flow (g/d)				Contribution*	
	S/C	PRG	SED	P	S/C	PRG	SED	P	S/C	PRG
Fatty acids										
14:0	2.29	1.78	0.40	**	0.22	0.00	0.00	*	22.2	0.00
15:0	1.44	1.38	0.19	*	0.13	0.00	0.04	*	9.02	0.00
16:0	24.9	27.1	3.13	*	5.44	0.03	0.46	*	21.8	0.00
17:0	1.32	1.62	0.30	*	0.11	0.00	0.02	*	8.33	0.00
18:0	88.6	108	13.9	*	7.30	0.10	3.33	NS	8.23	0.00
<i>Trans</i> -11 18:1	5.20	25.1	4.16	*	1.20	0.02	0.18	*	23.1	0.00
18:2 n-6	10.2	2.25	0.68	*	1.16	0.00	0.15	*	11.4	0.00
18:3 n-3	1.66	3.12	0.46	*	0.12	0.00	0.04	*	7.23	0.00
<i>Cis</i> -9, <i>trans</i> -11 CLA	0.10	0.08	0.04	*	0.08	0.00	0.05	*	80.0	0.00
<i>Trans</i> -10, <i>cis</i> -12	ND	0.07	0.02	*	0.00	0.00	0.00	*	0.00	0.00
Total Fatty acids	173	207	20.7	*	21.1	0.10	3.58	*	0.01	0.00

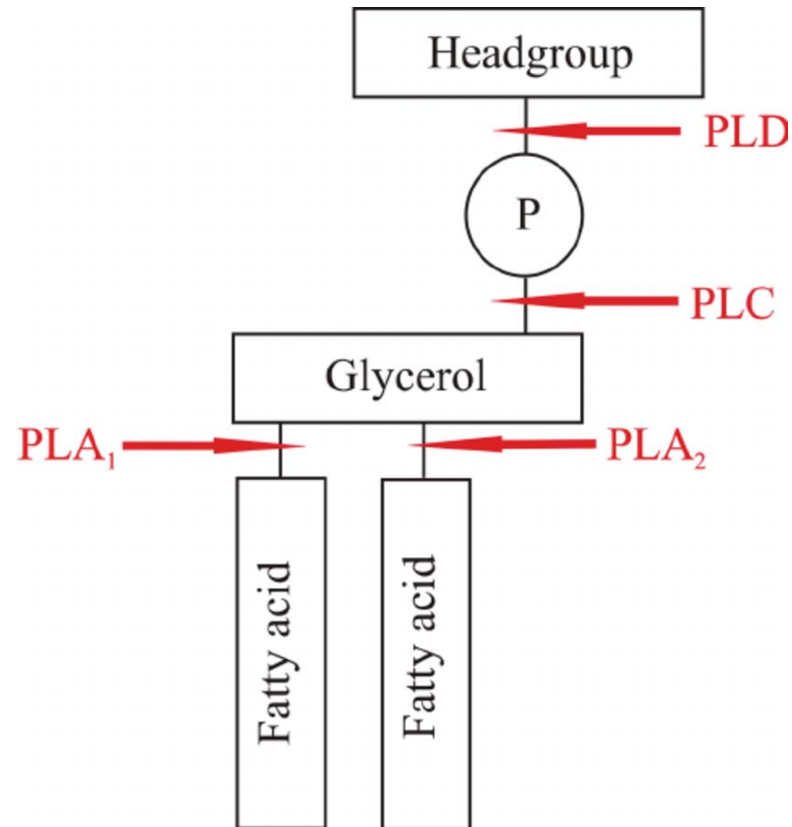
Retention of protozoa within the rumen following grass feeding
 Challenge - enhance chloroplast uptake whilst ensuring duodenal flow

Possible future directions?

- LIPASES - Novel targets for inhibition of biohydrogenation:
- Inhibit – More PUFA flow to duodenum?
- Enhance – More PUFA flow to duodenum?



Proof of principle: Effects of addition of PLA₁ on rumen lipid metabolism



75, 100, 125 and 150 μ M phospholipase A1 added to *in vitro* incubations containing rumen fluid and phospholipids extracted from perennial ryegrass.

Effects on polar lipids

Polar fraction (phospholipids):

75, 100, 125 and 150 μ M phospholipase A1:

↓ 18:3 n -3 and 18:2 n -6.

Likely fatty acids on position A1 of perennial ryegrass

Free non-esterified fatty acids:

Biohydrogenation 18:2 n -6:

75 μ M: 75.8%

100 μ M: 85.0%

125 μ M: 80.4%

150 μ M :73.0%

Biohydrogenation 18:3 n -3:

75 μ M: 74.6%

100 μ M: 87.5%

125 μ M: 15.2%

150 μ M :20.1%

Conclusions

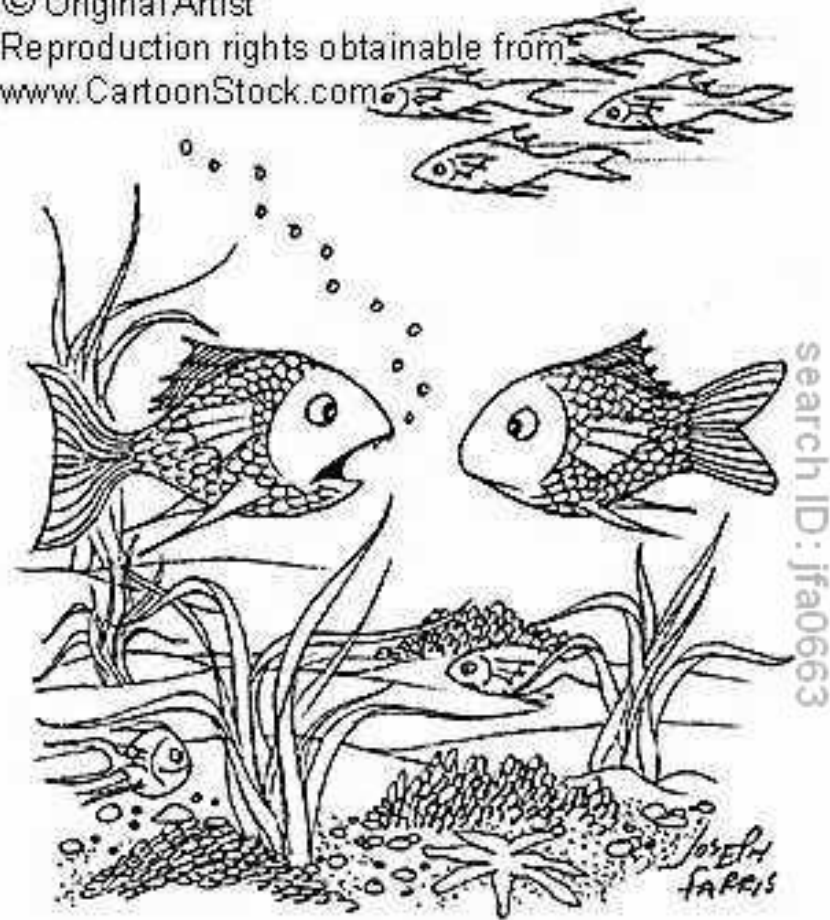
- Rumen lipid metabolism is clearly very complicated, particularly biohydrogenation
- As a consequence, manipulation of biohydrogenating bacteria to modify the 'healthiness' of meat and milk is challenging at present.
- Hungate 1000 genomes may help us understand the isomerases and reductases involved.
- Predict biohydrogenation capacity from microbiome diversity?

Conclusions

- Lipolysis could be an easier target?
- More work needs to be undertaken to understand rumen lipolysis
- Could we develop technologies to enhance protozoal bypass, whilst maintaining rumen numbers, in order to ensure more chloroplast flow to the duodenum?
- Novel technologies must consider effects on methane and production

Questions?

© Original Artist
Reproduction rights obtainable from
www.CartoonStock.com



"Bad news! More people are switching from red
meat to fish!"