

# TOGETHER FOR A CLEAN CITY



# WHAT IS IVAGO?



Intergemeentelijke



Vereniging voor



Afvalbeheer in



Gent en Omstreken

*Waste management Company  
In Ghent and surrounding areas*

# HOW WE THINK IN BELGIUM ABOUT WASTE

## LADDER VAN LANSINK <sup>2.0</sup>



## LADDER VAN LANSINK - THE WASTE HIERARCHY



Collaborations with several partners

# HOW WE THINK IN BELGIUM ABOUT WASTE

Collaborations with several partners like



# WEBSITE

- [www.ivago.be](http://www.ivago.be)

ParticulierBedrijven

Geef je adres inVeelgestelde vragenNederlands

IVAGOHOMEAFVALGLAS IN GENTDIENSTEN AANVRAGENVACATURESOVER IVAGOMIJN IVAGOCONTACT

## GEEF HIER JE ADRES IN

We gebruiken je adres om je op de website persoonlijke informatie te geven.

Bevestig

Bekijk je afvalkalenderAfvalgidsRecyclageparken

Het is bijna herfst, en dan vallen de blaadjes van de straatbomen.

RUIM JIJ ZE MEE OP?

BESTEL NU JE GRATIS COMPOSTEERBARE BLADZAKKEN!

Controleer hier of je adres recht heeft op bladzakken.

# WEBSITE

[Particulier](#) [Bedrijven](#) [Geef je adres in](#) [Veelgestelde vragen](#) [Nederlands](#) [🔍](#)

**IVAGO** [HOME](#) [AFVAL](#) [GLAS IN GENT](#) [DIENSTEN AANVRAGEN](#) [VACATURES](#) [OVER IVAGO](#) [MIJN IVAGO](#)

## GEEF HIER JE ADRES IN

We gebruiken je adres om je op de website persoonlijke informatie te geven.

Bevestig

[Bekijk je afvalkalender](#) [Afvalgids](#) [Recyclageparken](#)

Op de hoogte blijven  
niewtjes rond afval  
afvalpreventie en recycling

Schrijf je in op de digitale

# IVAGO

nieuwsbrief!

[Turks - Türkçe](#)  
[Roemeens - Română](#)  
[Slowaaks - Slovenský](#)  
[Bulgaars - български](#)  
[Frans - Français](#)  
[Engels - English](#)

# USE OUR CHECKLIST

- 1) Do I need bags, a container ...?
- 2) Check the calendar: when is the collection? → Recycle App
- 3) Is everything well sort?
- 4) Is my waste not too heavy?
- 5) I only present my waste between 7 PM – 7 AM

Everything you  
need to know!

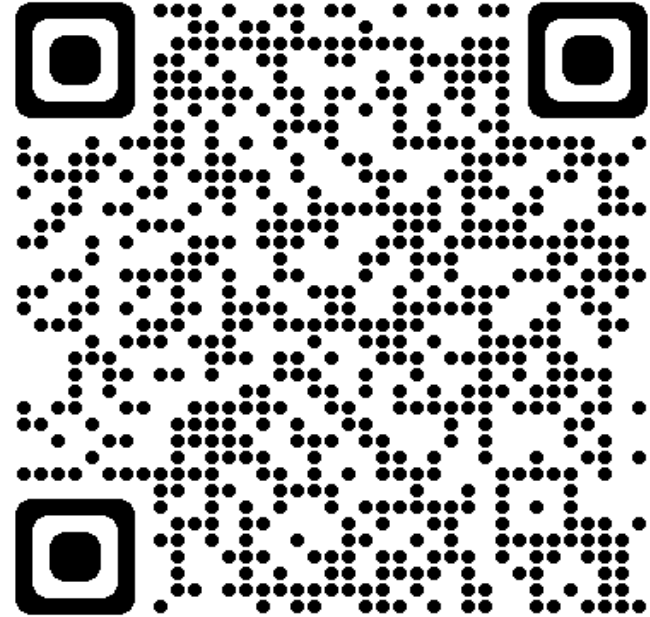




# RECYCLE APP

**Download  
Recycle!**

Recycle! weet alles van afval.





# WHAT DO WE COLLECT AT HOME?

PLASTICS METALS  
DRINKCARTONS





# PMD

(PLASTICS, METAL  
CONTAINERS AND  
DRINKS CARTONS)

PMD



**Drie formaten pmd  
OVERAL OK!  
In Gent en Destelbergen**



**30 liter**



**60 liter**



**90 liter**



# PMD

(PLASTICS, METAL  
CONTAINERS AND  
DRINKS CARTONS)

PMD



## DO / WEL

- **P= plastic household packaging**  
Plastic bottles and vials, trays, containers, pots, tubes, household wrappers, bags, etc.
- **M = metal packaging**  
Aluminium trays and containers, aerosols for foodstuffs and cosmetics, metal containers lids and covers (for jars and bottles), drink and tin cans, etc.
- **D = drinks cartons**  
Fruit and vegetable juices, soup, milk etc.





PMD

(PLASTICS, METAL  
CONTAINERS AND  
DRINKS CARTONS)

PMD



## **DON'T** / NIET

- Packaging consisting of a mix of materials (drinks bags, pouches for wet pet food etc.)

- Packaging with a child safety lock



- Packaging with at least one of the following pictograms:



- Kga (small hazardous waste) (insecticide, herbicide, anti-moss products, rat poison, etc.)
- Packaging larger than 8 litres
- Aluminium foil and styrofoam





# PMD

(PLASTICS, METAL  
CONTAINERS AND  
DRINKS CARTONS)

PMD



# WHAT DO WE COLLECT AT HOME?

GLASS



Buitenlandse studenten





# GLASS

GLAS

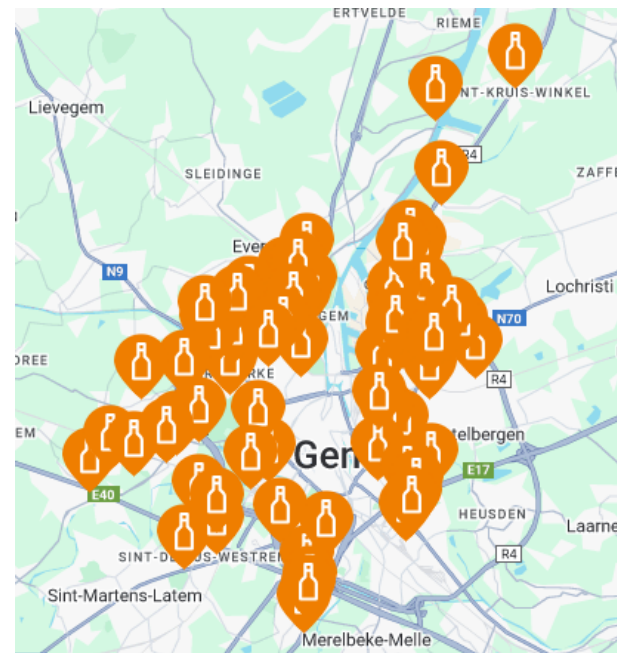






# GLASS

GLAS





# GLASS

GLAS



## DO / WEL

- Transparent glass bottles
- Transparent glass jars
- Transparent glass vials



## DON'T / NIET

- Heat-resistant glass (oven dishes and cooking trays)
- Porcelain and earthenware
- Stone bottles and jars
- Ceramics and terracotta
- Opal glass and crystal (e.g. drinking glasses)
- Milk glass
- Flat glass (windows, mirrors, etc.)
- Incandescent light bulbs, fluorescent light bulbs, LED lamps and energy-saving lamps
- Shattered glass





# GLASS

GLAS



# WHAT DO WE COLLECT AT HOME?

PAPER AND CARDBOARD



Buitenlandse studenten



# PAPER & CARDBOARD

PAPIER & KARTON







# PAPER & CARDBOARD

PAPIER & KARTON



## DO / WEL

- Newspapers, magazines and brochures (without foil)
- Paper bags and cardboard boxes
- Books
- Writing or printing paper



## DON'T / NIET

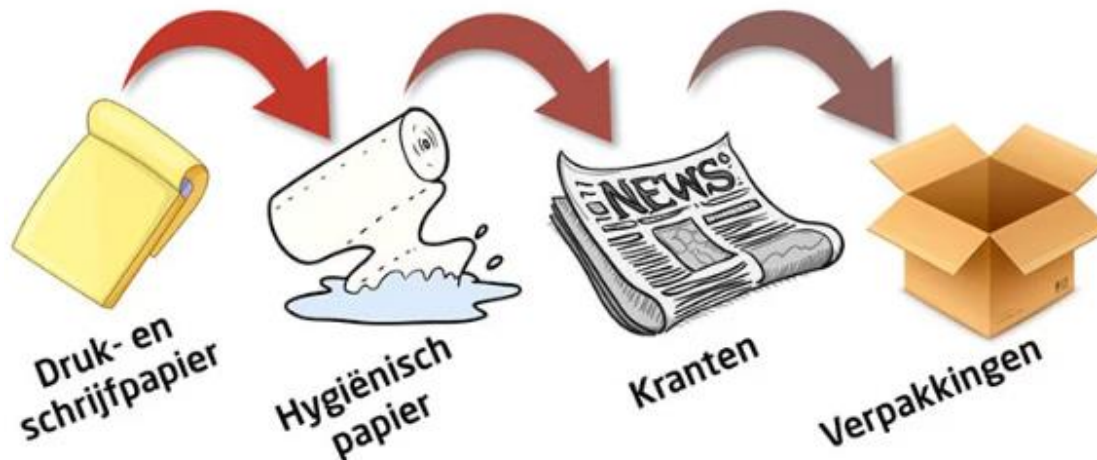
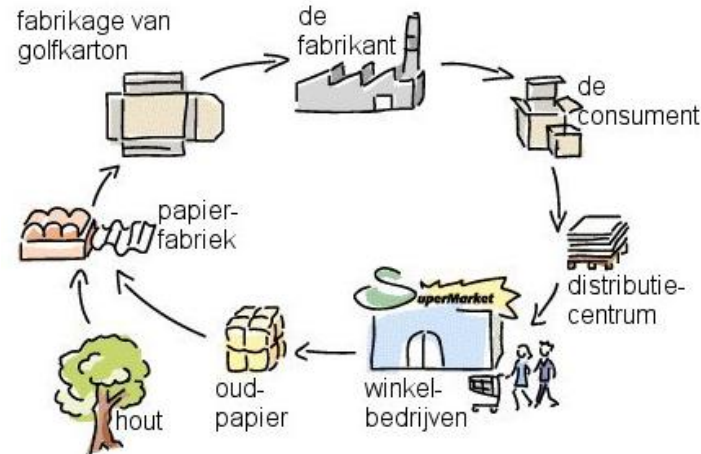
- Dirty or greasy paper
- Paper tissues, toilet paper or paper towels
- Wall paper
- Drinks carton
- Plastic foils





# PAPER & CARDBOARD

## PAPIER & KARTON





# WHAT DO WE COLLECT AT HOME?

## BIOWASTE



Buitenlandse studenten



**GFT** (GREENS, FRUIT  
& GARDEN WASTE)

GFT





**GFT** (GREENS, FRUIT  
& GARDEN WASTE)

GFT



## **DO** / WEL

- Peelings and remains of fruit, vegetables and potatoes
- Animal and vegetable kitchen waste and scraps
- Leftover bread
- Leftover meat and fish, shellfish (no shells)
- Eggs and egg shells
- Solid dairy products
- Nuts, seeds
- Coffee grounds and paper filters
- Tea leaves
- Kitchen roll paper
- Excrement from small pets (guinea pig, rabbit)
- House and garden plants (including potting soil)
- Small garden and pruning waste (leaves, grass, weeds, hedge clippings)
- Sawdust and shavings from untreated wood





**GFT** (GREENS, FRUIT  
& GARDEN WASTE)

GFT



## **DON'T** / NIET

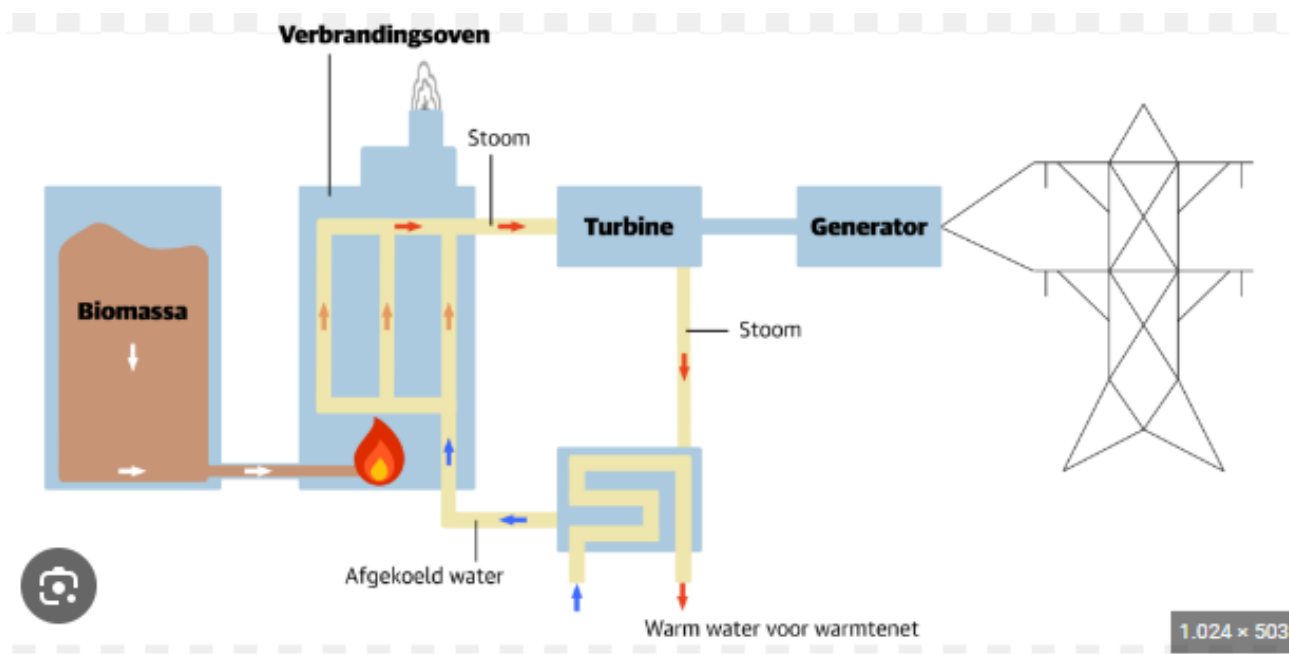
- Large quantities of liquids (soup, milk, coffee...)
- Sauces, fats and oils
- Tea bags and coffee pads
- Treated wood
- Bones and animal (slaughter) waste, carcasses
- Mussel or oyster shells
- Cat litter and bird cage sand
- Excrement from larger pets
- Dust from the vacuum cleaner
- Disposable nappies and other hygiene waste
- Earth, sand and cork
- Ash residue, charcoal
- Large pruning wood or big branches





**GFT** (GREENS, FRUIT  
& GARDEN WASTE)

GFT



# WHAT DO WE COLLECT AT HOME?

RESIDUAL WASTE





# RESIDUAL WASTE

RESTAFVAL







# RESIDUAL WASTE

RESTAFVAL



**DON'T** / NIET

- Materials that can be recycled (paper and cardboard, pmd (Plastics, metal containers and drinks cartons) or glass)
- Injection needles
- Kga (small hazardous waste) (pots of paint, varnish, frying oil or batteries)
- Medication



**DO** / WEL

- Domestic (non-recyclable) waste that can be incinerated





# RESIDUAL WASTE

RESTAFVAL



Waste-to-energy  
plant



# WASTE-TO-ENERGY PLANT

## Produces power and electricity from waste

- Power: for internal use and for our neighbours: UZ Ghent & Eastman
  - Electricity: for internal use and the general network



**EASTMAN**





# HOW DO WE COLLECT DEPENDS ON WHERE YOU LIVE!

01



## BAG AREA

Residual waste: green bags

02



## CONTAINER AREA

03



## APARTMENT WITH CONTAINERS

04



## SORTING POINT

# SORTING POINTS

# GENERAL RULES FOR EVERY AREA (1/3)



## IF YOU WANT TO KNOW WHEN WE COME AND COLLECT YOUR WASTE, THEN

- check the paper collection calendar,
- check the online collection calendar on our website,
- or download the Recycle! App.



## PUT YOUR DOMESTIC WASTE OUTSIDE IN TIME

No sooner than **7 PM** on the day before the collection and no later than **7 AM** on the day of the collection.

Do you live in one of the 46 streets of the Overpoort neighbourhood? Then you can place your domestic waste on the pavement no sooner than at 5 AM and no later than at 11 AM on the day of the collection. You will find the list on our website.

## OR TAKE YOUR RESIDUAL WASTE TO YOUR SORTING POINT IN TIME

You can take your domestic waste to the sorting point, every day, between **6 AM and 10 PM**.



# GENERAL RULES FOR EVERY AREA (2/3)



## **WATCH THE WEIGHT**

Help our waste collectors and make sure your container, bag or box is not heavier than allowed.



## **PRESENT YOUR BAG CORRECTLY**

- Make sure the bags are properly tied
- Make sure there is a handle.
- Put the bag on the pavement in front of your house.



## **CORRECTLY PLACE YOUR CONTAINER ON THE PAVEMENT**

- Close the container's lid.
- Do not push the waste down.
- Position the container with the handle facing the street.



# GENERAL RULES FOR EVERY AREA (3/3)

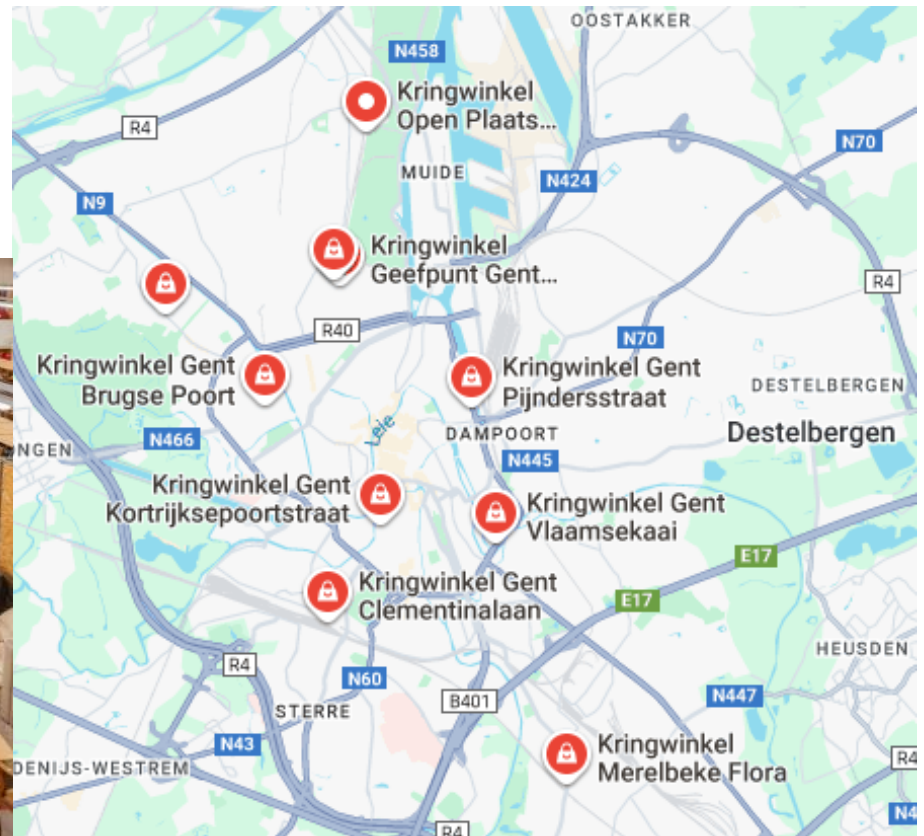


Does your residual waste contain an object or material that is not allowed or is there a problem with your container ? We will leave behind a label, sticker or card explaining what you need to do.

## **FINES FOR FLY-TIPPING**

Dumping waste is illegal. This is called fly-tipping. You can get a fine of up to 250 EUR. On top of this, you will be charged by IVAGO for the clean-up costs.

# KRINGLOOP



# BULKY WASTE

bring it to one of our waste recycling centres  
Or Make an appointment on our website. IVAGO will come pick it up



## BULKY WASTE

GROFVUIL



### DO / WEL

- Domestic waste that can be incinerated and that cannot be put inside a waste bag or container
  - Wood (planks, slatted base, furniture, windows and doors without glass, etc.)
  - Rigid plastics (broken bucket, toys, etc.)
  - Furniture without glass or mirrors (chair, sofa, carpet, mattress, etc.)
- Metal (bird cage, racks, metal base of chairs, etc.)



### DON'T / NIET

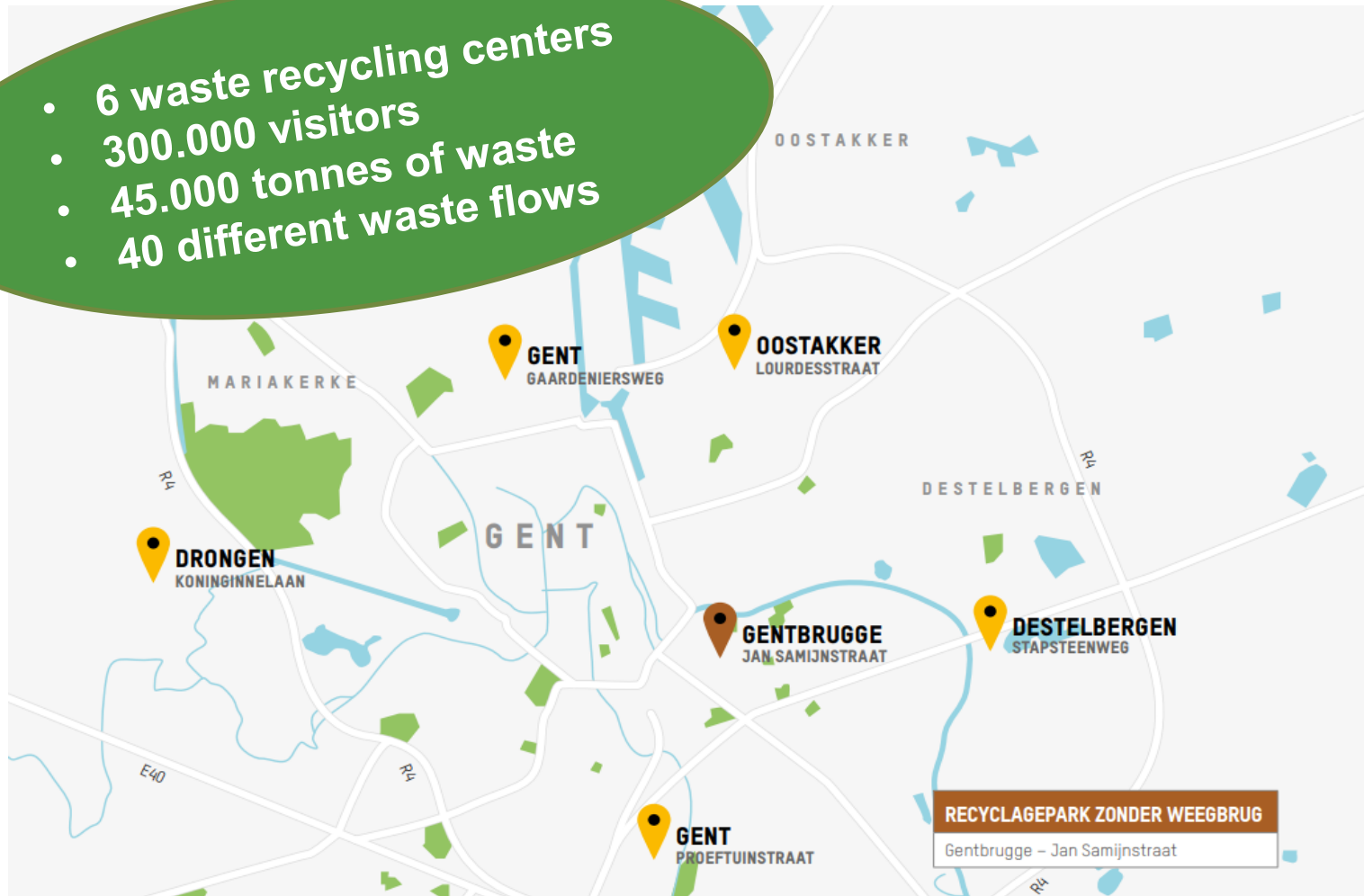
- Combustible bulky waste that can be collected during normal household waste collection
- Waste in bags
- Recyclable waste, paper and cardboard, glass, pmd (Plastic, metal containers and drinks cartons) and gft (Greens, Fruit & Garden Waste)
- Electrical appliances and devices
- Construction and demolition waste, toilets, sinks, stone flower pots, plasterboard, etc.
- Kga (small hazardous waste) (pots of paint, frying oil, etc.)
- Mirrors, glass panes and all sorts of bulbs
- Styrofoam
- Prunings and green waste

Regular waste  
or recycling  
centre



# WASTE RECYCLING CENTERS

- 6 waste recycling centers
- 300.000 visitors
- 45.000 tonnes of waste
- 40 different waste flows





# PUBLIC CLEANING OF GHENT



- IVAGO + Service Company of Social Economy (DBSE)
- Manual and machine sweeping
- 3000 litter bins / emptying of the bins: 8.000 per week
- Clean-up of fly-tipping
- Weed removal
- Festivities

# KEEP THE CITY CLEAN

Become a 'Proper Pierke' and help us to keep our beautiful city clean

**WORD HIER  
EEN PROPER PIERKE**

**IVAGO**





Questions?



IVAGO | Intergemeentelijke opdrachthoudende vereniging Gent en Omstreken  
Proeftuinstraat 43 | 9000 Gent | tel. 09 240 81 11 | [info@ivago.be](mailto:info@ivago.be) | [www.ivago.be](http://www.ivago.be)