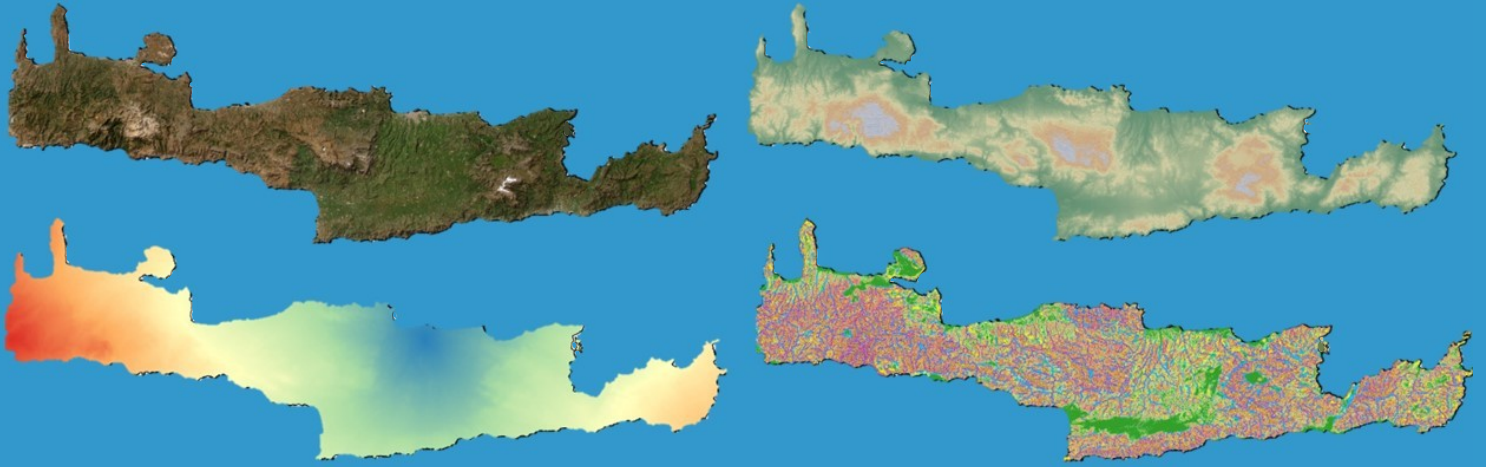


GIS in Crete:

Archaeological Questions and Computational Answers

Athens, National Hellenic Research Foundation
30-31 May 2024



Nestled in the eastern Mediterranean Sea, Crete, the largest of the Greek islands, spanning approximately 8,300 km², offers an extensive canvas for archaeological surveys and excavations.

Along with identifying and documenting archaeological sites, the archaeological surveys conducted on Crete have contributed to our understanding of ancient and modern settlement patterns, of land use patterns, agricultural practices, and resource exploitation.

In addition to traditional surveys and excavations, Geographic Information System (GIS) studies have played a significant role in enhancing our understanding of Crete's archaeological sites and their spatial context. GIS has provided a powerful tool for analysing, visualizing, and interpreting data related to the island's cultural heritage.

The Institute of Historical Research of the National Hellenic Research Foundation and the Department of Archaeology at Ghent University are pleased to announce a conference entitled "GIS in Crete: Archaeological Questions and Computational Answers", dedicated to exploring the interest of GIS and geospatial analyses to answer archaeological and historical questions in Crete. This conference aims to bring together researchers working in the field of GIS and the archaeology of Crete, in order for them to share their knowledge, experience, and insights. We invite submissions for both theoretical papers and case-studies that highlight the contribution of GIS in addressing archaeological questions across all periods of human history on Crete.

Themes to be addressed include – but are not limited to:

- Examining the epistemological and methodological implications of integrating GIS into archaeological research.
- Exploring the theoretical foundations of GIS and its applicability in the archaeology of Crete.
- Evaluating the advantages, challenges, and limitations of GIS in archaeological studies.
- Presenting specific archaeological projects that have employed GIS as a fundamental tool in the archaeology of Crete and highlighting the motivations and rationale behind the application of GIS in these projects.

Call for Papers

**Abstract submission
until 27 October 2023**

Organizers

Vyron Antoniadis, Senior Researcher
*Institute of Historical Research
National Hellenic Research Foundation*

Quentin Drillat, PhD candidate
*Department of Archaeology
Ghent University*



Abstract Submission

We invite researchers interested in participating in the conference to submit abstracts (maximum 250 words) for a 20-minute presentation by 27 October 2023. Please also include the title, name(s) of the author(s), affiliation(s), and contact information. Please submit your abstracts and direct any inquiries at gisincrete@gmail.com and at <https://shorturl.at/dszET>