

# MOLECUBES MODULAR BENCHTOP IMAGING



# WHO WE ARE

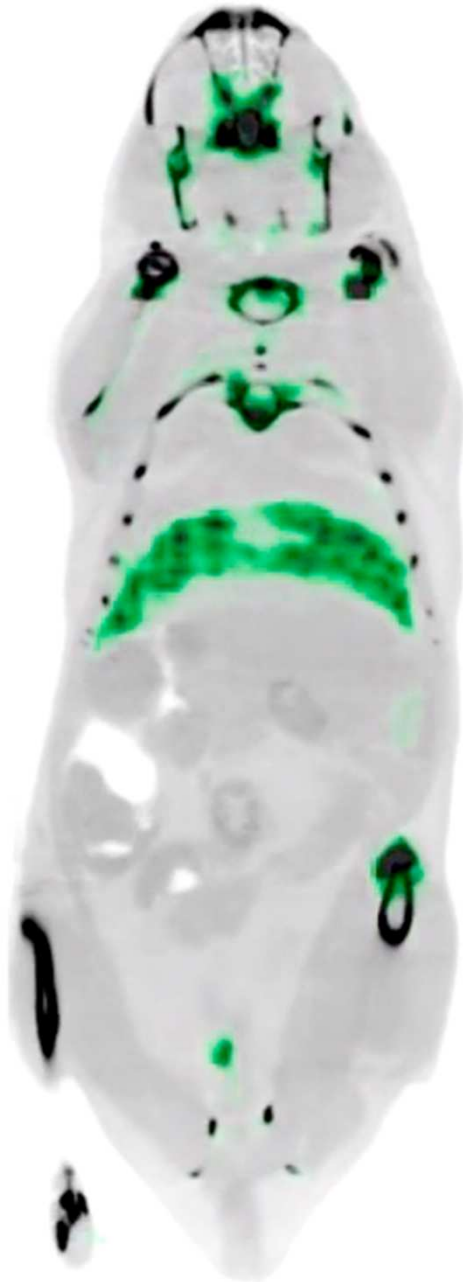


MOLECUBES is a Ghent University spin-off started with the support of iMinds. Springing from the MEDISIP research group and the preclinical INFINITY lab, a team of young hardware and software engineers with hands-on experience grouped together to make a difference in their and your daily imaging practice.

We build preclinical imaging cubes allowing you to combine SPECT, PET and CT imaging. Start with any cube you desire and add one at any time, leaving full flexibility at your side. A compact footprint combined with intuitive acquisition software allows the systems to be used almost anywhere by anyone.

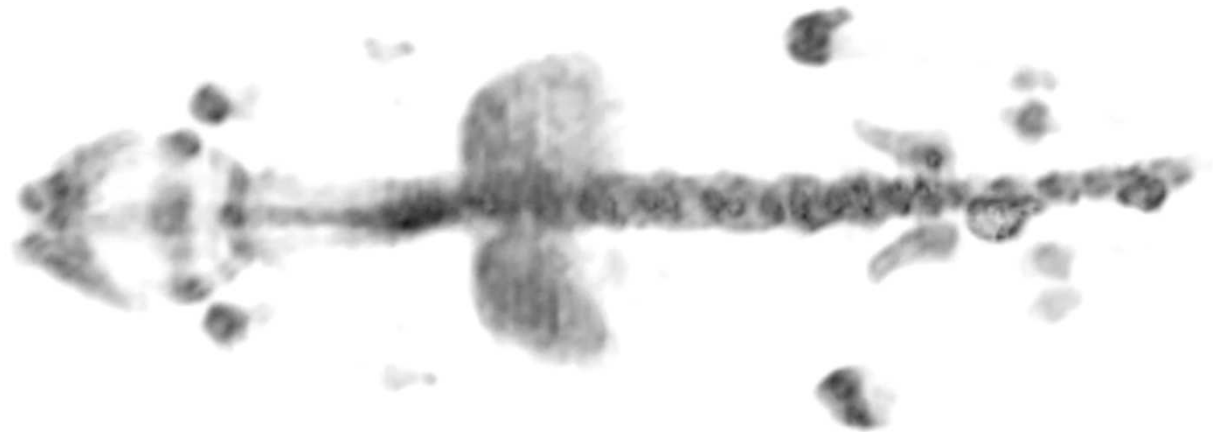
# MULTIMODAL MOUSE

- automated co-registration  
with MOLECUBES acquisition software.

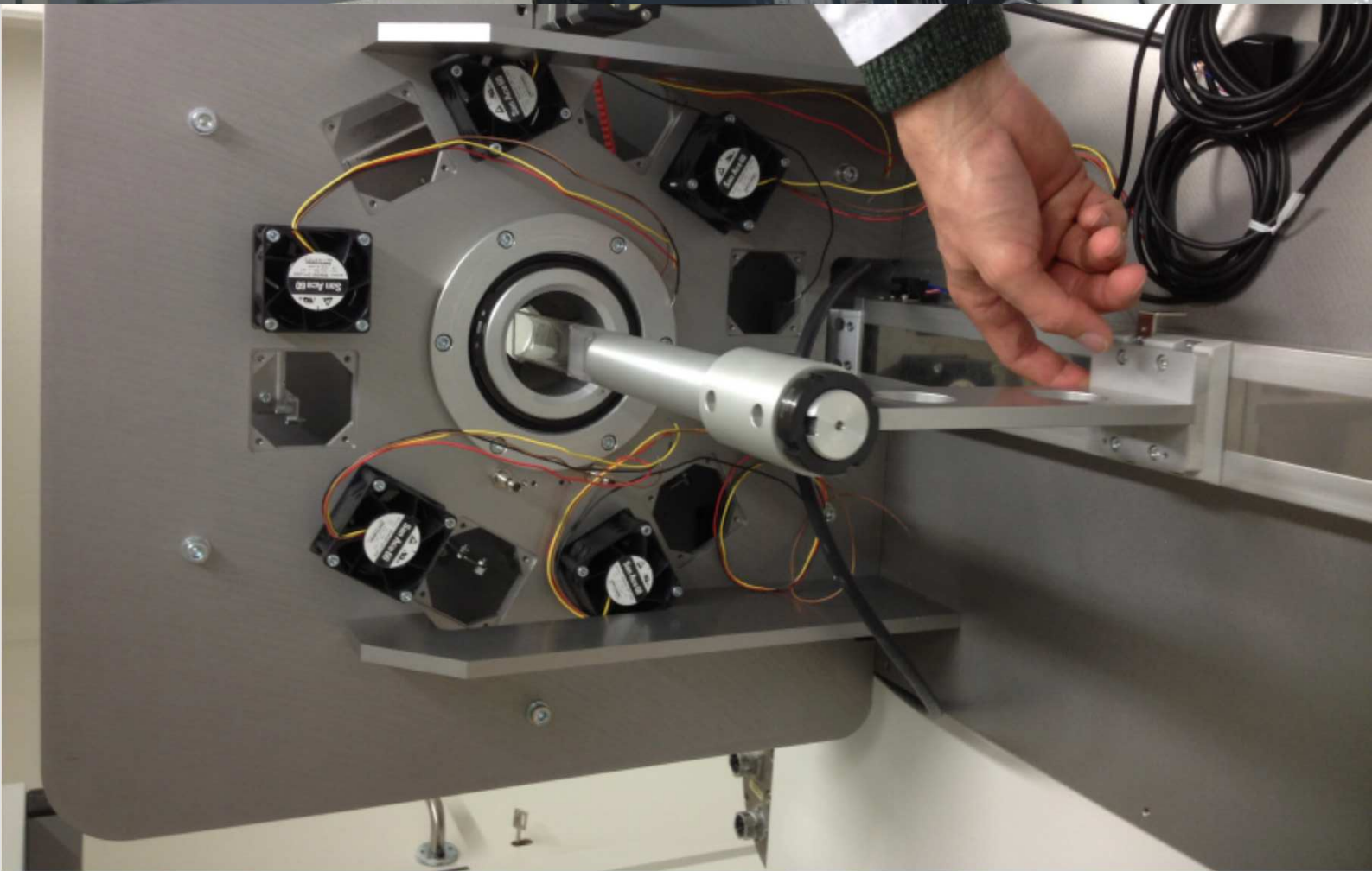
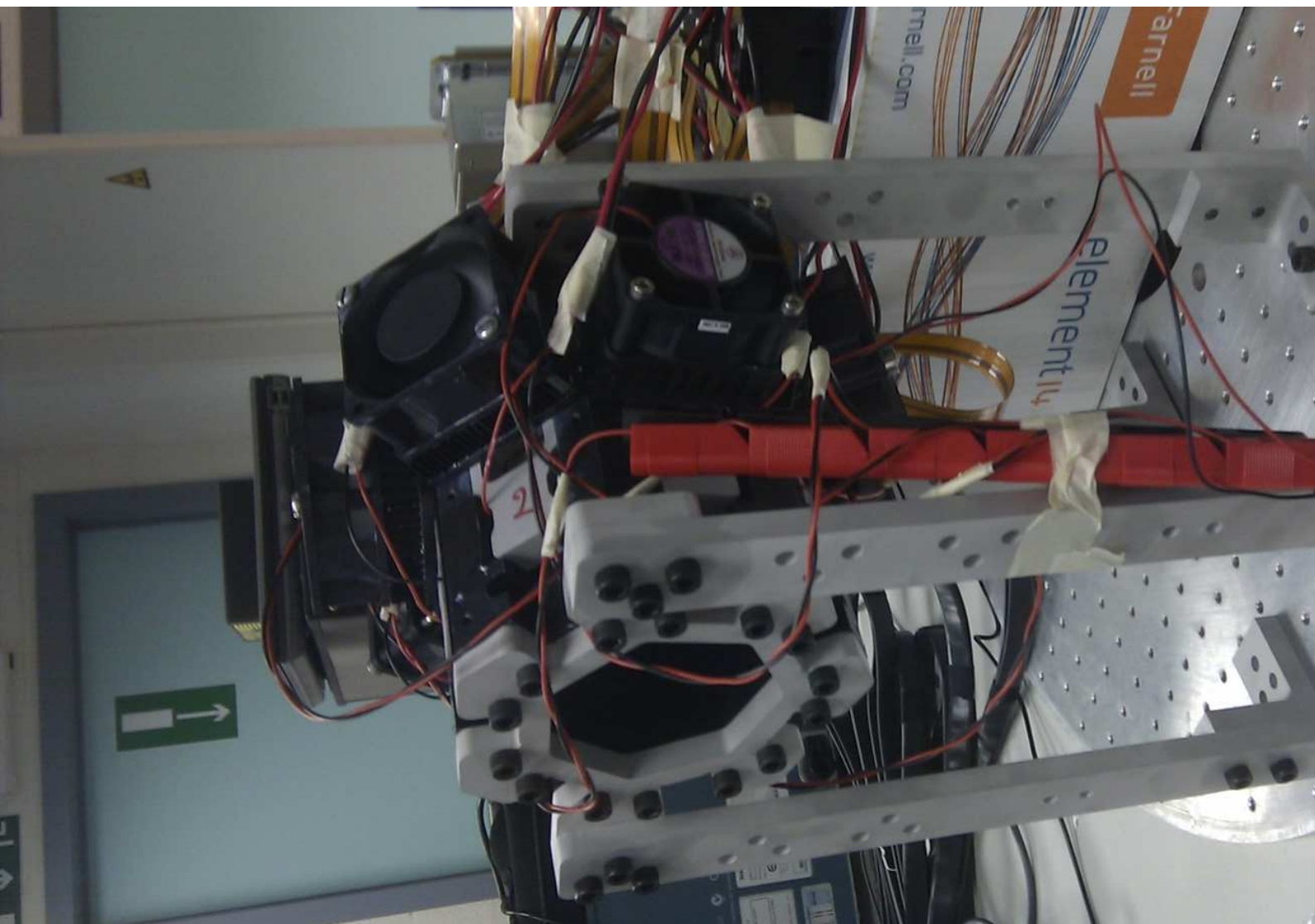


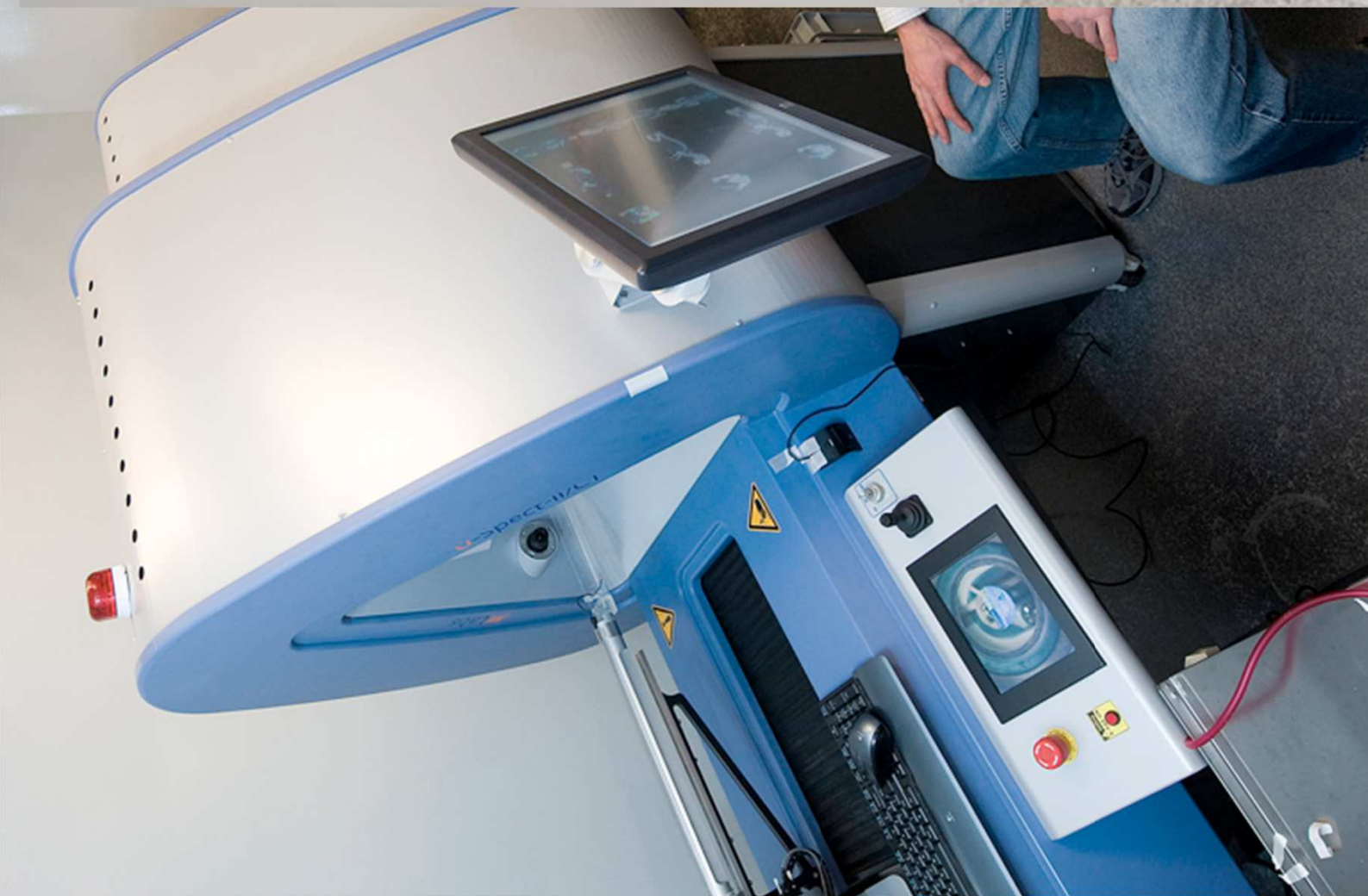
## MOUSE FULL BODY

-  $^{99m}\text{Tc}/\text{HDP}$  bone scan











# MOLECUBES

COMPACT —  
MODULAR —  
STATE-OF-THE-ART —  
USER-FRIENDLY —













## CUSTOM PC-CASES



DARK BRIGHT COLOURS LED'S BACKLIGHTING FUTURISTIC

YOUNG GAMERS CAR-ENTHUSIASTS

## HIGH-END HIFI SYSTEMS



BRUSHED ALUMINIUM    MINIMALIST DESIGNS    EXPENSIVE MATERIALS

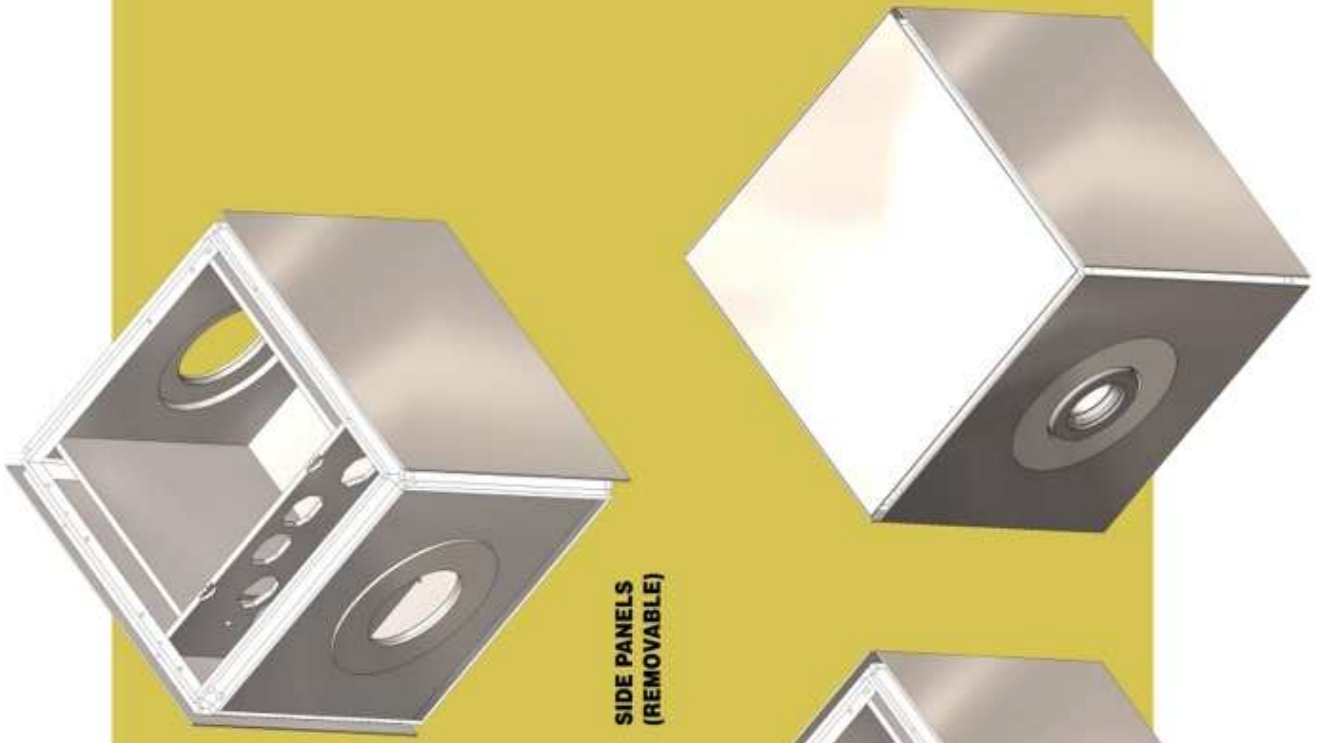
WELL-OFF 40+    AUDIOPHILES











**SIDE PANELS  
(REMOVABLE)**



**CUSTOM PROFILES FOR LEDs**



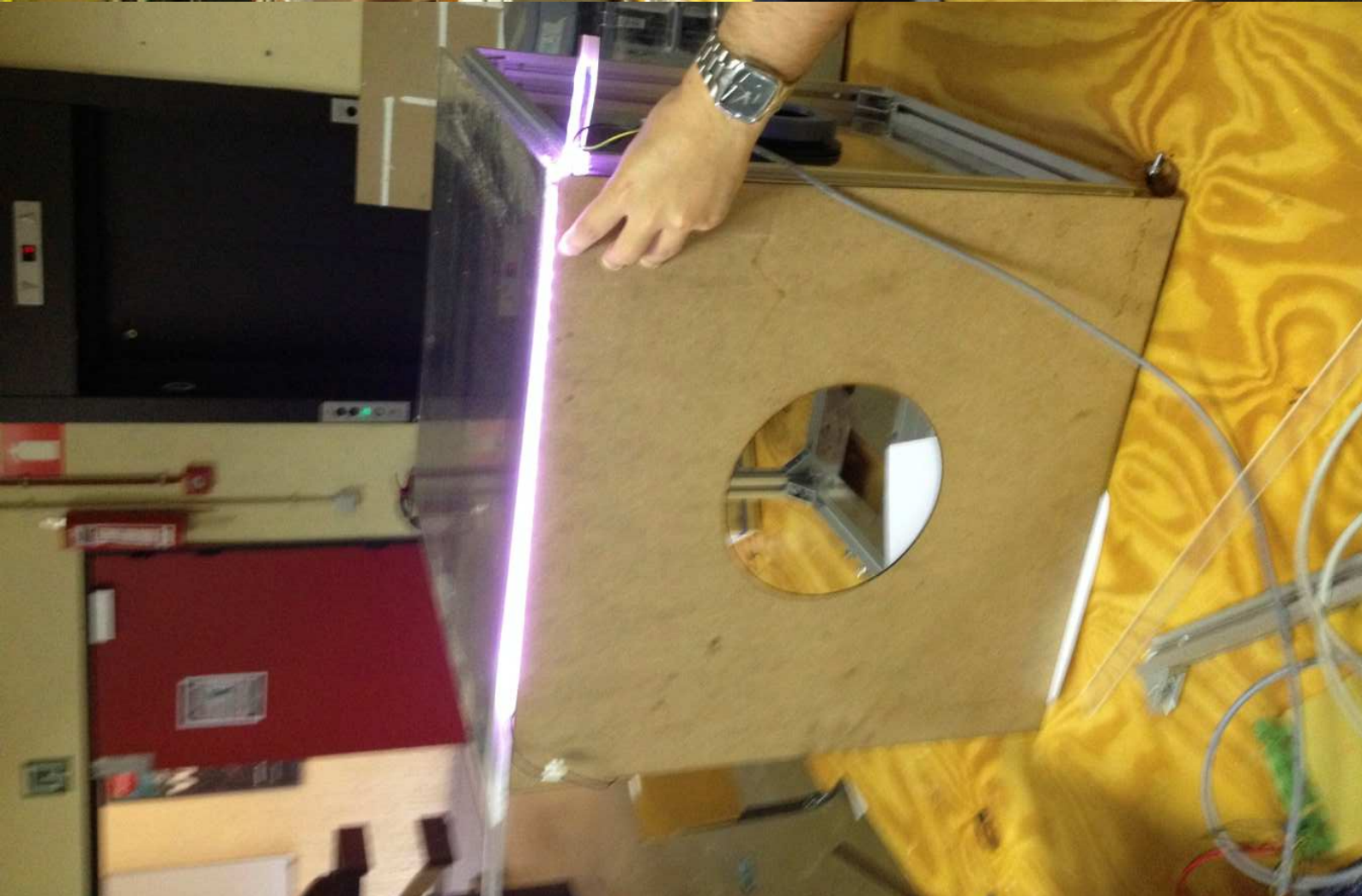
**BASE**



**'TUNNEL'**



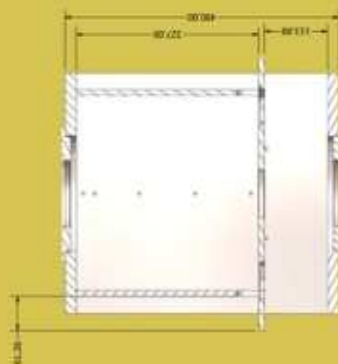
**FRONT PANEL  
(FIXED)**



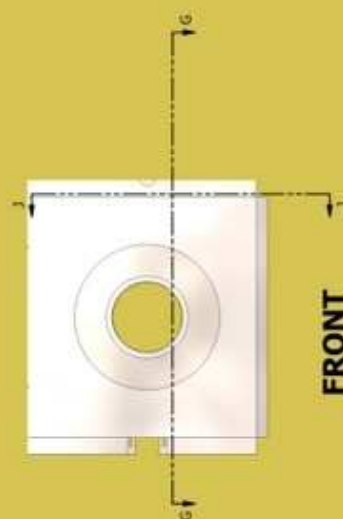




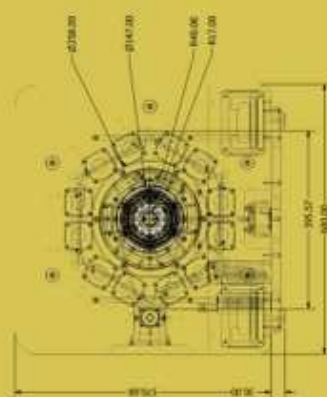
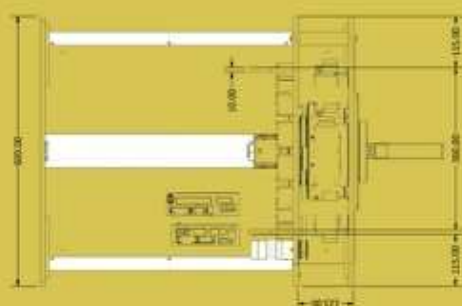
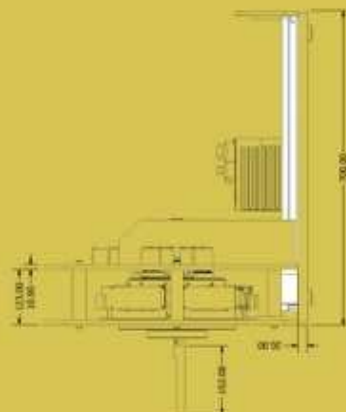
**SIDE**



**SECTION G-G**  
SCALE 1:4



**FRONT**



CUBES

AR  
TOP  
G



**MOLECUBI**  
MODULAR BENCHTOP

3 MODALITIES



**Y-Cube**  
SPECT imaging

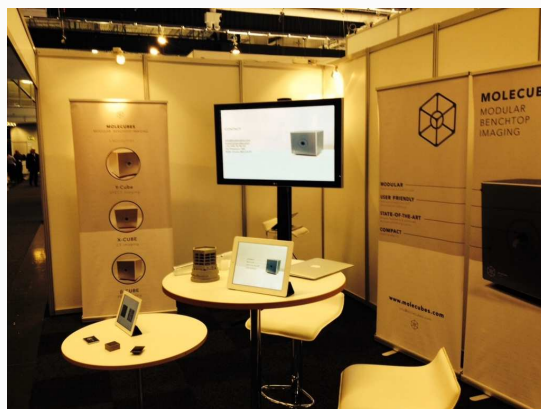


**X-CUBE**  
CT imaging





# MARKET PENETRATION (Korea/Gothenborg Sept/Okt 2014)



# MOLECUBES - 30+ Generated Leads



- 30+ Leads Generated
- Interested distributors

# Lessons Learned

- design matters
- engineers are (often) not designers
- interaction is key
- get your hands dirty
- the process is iterative

