



UNIVERSITEIT
GENT



UNIVERSITEIT
GENT

EDUCATION DEPARTMENT

EDUCATIONAL SUPPORT TEAM – LANGUAGE SUPPORT ACADEMIC DUTCH AND ENGLISH

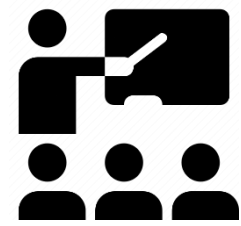
TIPS & TRICKS FOR YOUR DISSERTATION

@ENTER | Workshops academic writing

WHO ARE WE?

LANGUAGE SUPPORT AT GHEENT UNIVERSITY

Education Department- language policy team



Workshops about academic language proficiency (general and on-demand, Dutch and English)



Advice on academic language proficiency (academic writing and speaking) on www.ugent.be/academic-writing.



Individual feedback:

At @ENTER, www.ugent.be/center (English)

At Taalonthaal, www.ugent.be/taalonthaal (Dutch)

GOAL OF THIS WORKSHOP

- Practical tips & tricks
- Based on frequently asked questions
- No in-depth information > other workshops
- Guidelines differ depending on your programme!



“If only I had known!”

1. LANGUAGE AND SPELLING

WRITING AIDS

Are there any typos or grammar errors in my text?
Have I used the passive voice too often?
Did I use enough signposting words?

WRITING ASSISTANT

Checks more than spelling

DICTIONARIES

<https://awa.schrijfhulp.be/login.php>

Ugent login: Ugent - awa_222310

ACADEMIC WRITING ASSISTANT

The screenshot shows the homepage of the Academic Writing Assistant (AWA) tool. The browser address bar displays 'awa.schrijfhulp.be/index.php'. The page header includes the logo 'Academic Writing Assistant' with the subtitle 'Developed at the Leuven Language Institute' and the 'KU LEUVEN' logo. A left sidebar contains navigation tabs for 'Text review' and 'Vocabulary resources', and a list of categories: 'LANGUAGE ISSUES' (with sub-items like Spellchecker UK, Spellchecker, Language, Tense use, Adverb Position), 'COHERENCE' (with sub-items like Readability, Sentence length, Paragraphing, Reference, Linking words and phrases, Recurring words and patterns), and 'STYLE' (with sub-item Personal language). The main content area features a welcome message and a 'Text review' section explaining that the tool highlights possible problems in text structure, coherence, and style. A large yellow text box is overlaid on the center of the page.

← → ↻ 🏠 🔒 awa.schrijfhulp.be/index.php

Academic Writing Assistant
Developed at the Leuven Language Institute

KU LEUVEN

Text review Vocabulary resources

Welcome to the Academic Writing Assistant, a writing tool designed to help students and researchers write academic texts. The tool comprises two components.

- **Text review**
This component offers advice on common language issues, coherence and cohesion, and stylistic matters. For each of these aspects, the writing tool will highlight **possible problems** in your text. As comments are generated automatically, not all the elements which are highlighted are necessarily wrong or relevant to your text. Conversely, the tool only focuses on a limited number of aspects, so some mistakes may not be indicated.

LANGUAGE ISSUES

- ▶ Spellchecker UK
- ▶ Spellchecker
- ▶ Language
- ▶ Tense use
- ▶ Adverb Position

COHERENCE

- ▶ Readability
- ▶ Sentence length
- ▶ Paragraphing
- ▶ Reference
- ▶ Linking words and phrases
- ▶ Recurring words and patterns

STYLE

- ▶ Personal language

The Academic writing assistant checks your text on structure, style and spelling.

WRITING AIDS

How do you spell... ?
Does that word exist?
What is the correct expression?

WRITING ASSISTANT

www.athena.ugent.be
Apps > Van Dale

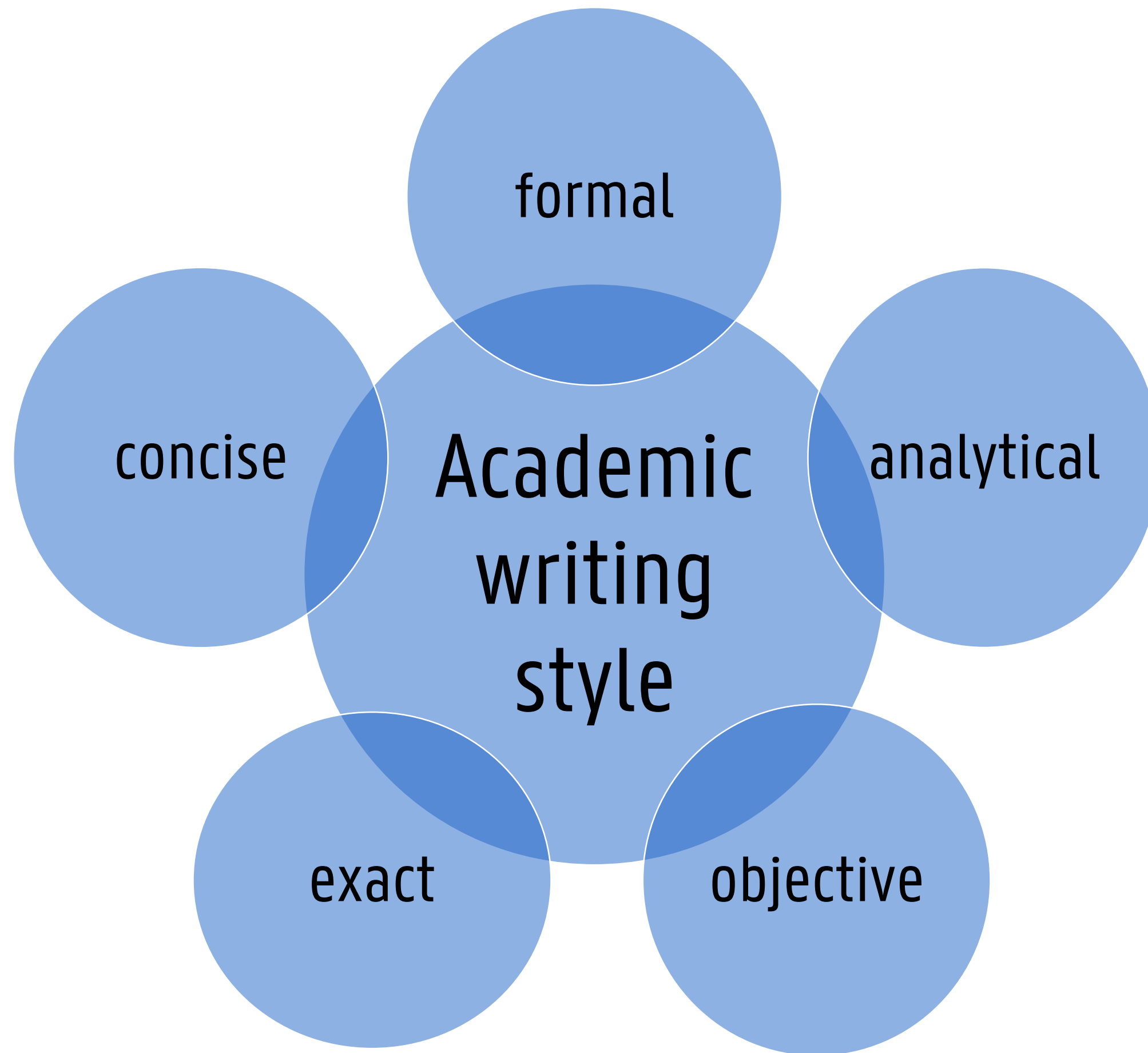
DICTIONARIES

Free via Athena or online

ONLINE DICTIONARIES

- Longman: <https://www.ldoceonline.com/>
- Oxford: <https://www.oxfordlearnersdictionaries.com/>
- Cambridge: <https://dictionary.cambridge.org/>
- Collins: <https://www.collinsdictionary.com/>
- Merriam-Webster: <https://www.merriam-webster.com/>
- Van Dale: <http://vandale.ugent.be/> (UGent only)

2. STYLE



WRITING AIDS

WRITING ASSISTANT

Passive, vague, personal, informal, old-fashioned... language

THESAURUS

Find synonyms

WEBSITE ACADEMIC PHRASES

Database with academic phrases

FREQUENTLY ASKED

I, we or impersonal?

- **I**: not in bachelor's or master's dissertation (unless explicitly requested)
- **We**: possible, check with your supervisor
- **Impersonal**: Passive voice (or be creative!)

The verdict was delivered in the defendant's favour.

The judge delivered the verdict in the defendant's favour.

In the first experiment, both products were used.

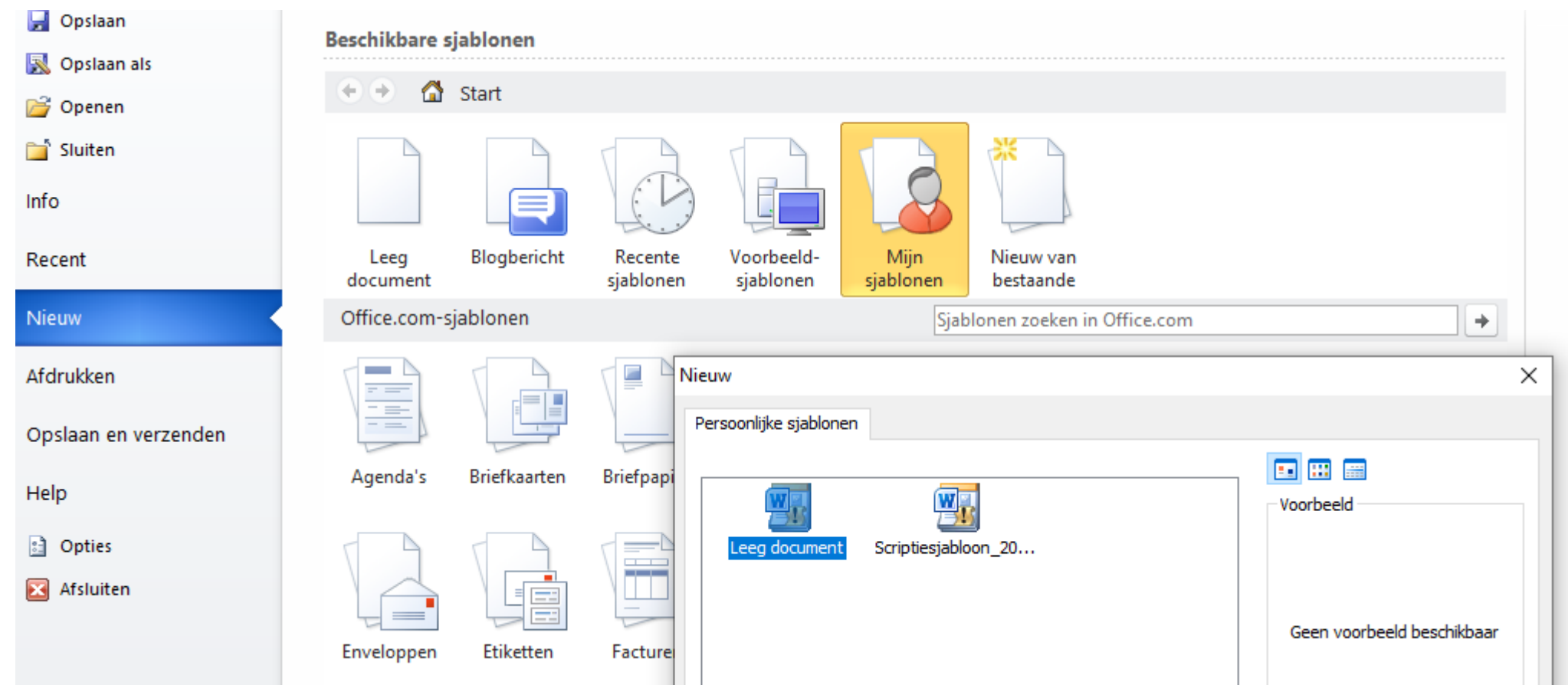
The first experiment combined both products.

3. LAYOUT

DISSERTATION TEMPLATE

<https://apps.flw.ugent.be/handleidingen/scriptiesjabloon>

- For Windows only
- Download
- In Dutch



4. PLAGIARISM

HOW TO AVOID PLAGIARISM?

Not your own idea? Always cite the source!

- Which reference style? APA, Chicago/Turabian, MLA, Vancouver, IEEE,...
- Quoting: reference + quotation marks
- Paraphrasing: reference
 - Paraphrase sufficiently!
- Translation: also needs a reference!



TIPS

- Note down your sources immediately, not afterwards.
- Lib.ugent.be: copy reference details
- Automatic reference list in Word
- Use reference manager software: Endnote (free via Athena!), Mendeley, Readcube, Zotero

Reference details

[Details](#)

[Citing](#)

[For librarians](#)

[For developers](#)

Permalink: <https://lib.ugent.be/catalog/rug01:000390879>

MLA: Briscoe, Mary Helen. *Preparing Scientific Illustrations : a Guide to Better Posters, Presentations and Publications*. 2nd ed. Berlin: Springer, 1996.

APA: Briscoe, M. Helen. (1996). *Preparing scientific illustrations : a guide to better posters, presentations and publications*. 2nd ed. Berlin: Springer.

Chicago: Briscoe, Mary Helen *Preparing Scientific Illustrations: A Guide to Better Posters, Presentations and Publications*. 2nd ed. Berlin: Springer, 1996.

5. NEED HELP?

@ENTER – INDIVIDUAL FEEDBACK



[Home UGent](#) > [Info for Ghent University students](#) > [Study facilities](#) > [Academic writing](#) > (c)ENTER - academic writing center

(c)ENTER - academic writing center

maart, 2022						
M	D	W	D	V	Z	Z
	1	2	3	4	5	6
7	8	9	10	11	12	13
14	15	16	17	18	19	20
21	22	23	24	25	26	27
28	29	30	31			
Maak afspraak >						

www.ugent.be/center

- academic text in English
- max. 4 pages, 30 minutes, on the spot
- Paper in Dutch? → Taalonthaal

@ENTER – CONTACT

BLANDIJNBERG - Room 100.053 (or online)

e center@ugent.be

t 09 264 38 22

w www.ugent.be/center

Check the agenda for available slots!



STUDENT PSYCHOLOGISTS

Training courses (Dutch)

- Fear of failure training
- Procrastination training
- Sleeping problems
- **Fear of failure or procrastinating in bachelor's or master's dissertation**
- Studying more efficiently

@ENTER – STUDY MATERIALS

ufora.ugent.be/d2l/home/582710

UNIVERSITEIT GENT Academic writing

Ufora Content Calendar Announcements Groups Ufora-tools Overige tools Course Admin

Academic writing

Announcements

WELCOME!

Course of type "xtra"

Learning path Academic writing (Ufora)

If you have any questions or comments, please contact center@ugent.be.

Enjoy!

Language coaches Mit, Fieke, Pauline and Liesbet

Calendar

Tuesday, 8 March 2022

WRITING WEEK

Online (and on campus) writing week

- 19 - 22 April 2022
- 4 - 8 July 2022

Guidance

- Language coach
- Student psychologist

Registration

- Website Academic writing



GOOD LUCK!

Mit Leuridan, Liesbet Triest, Fieke Van der Gucht en Pauline Van Daele

Medewerkers Talenbeleid Academisch Nederlands en Engels

DIRECTIE ONDERWIJSAANGELEGENHEDEN:
TALENBELEID ACADEMISCH NEDERLANDS EN ENGELS

 Ghent University
 @taalbeleidUGent
 Ghent University

e taalbeleid@ugent.be
t +32 9 264 98 21

www.ugent.be/taaladvies